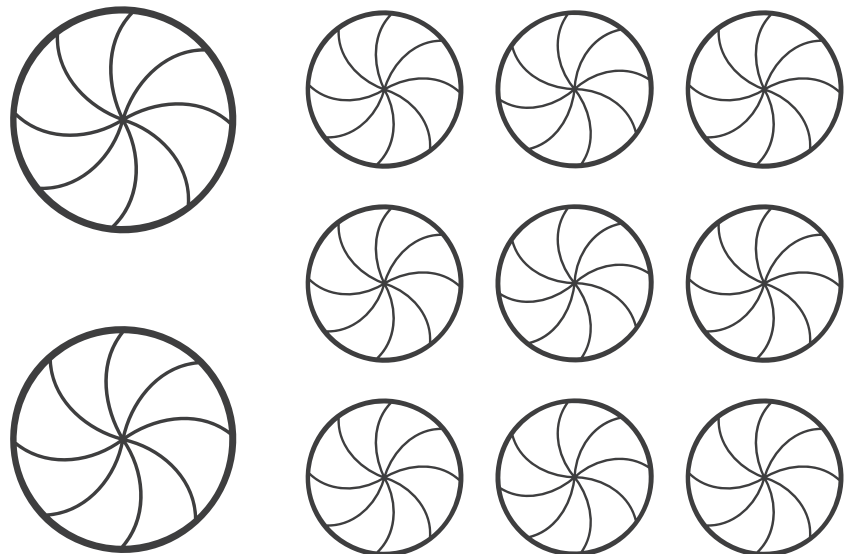
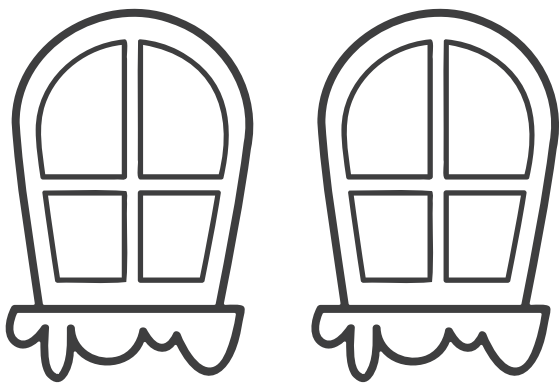
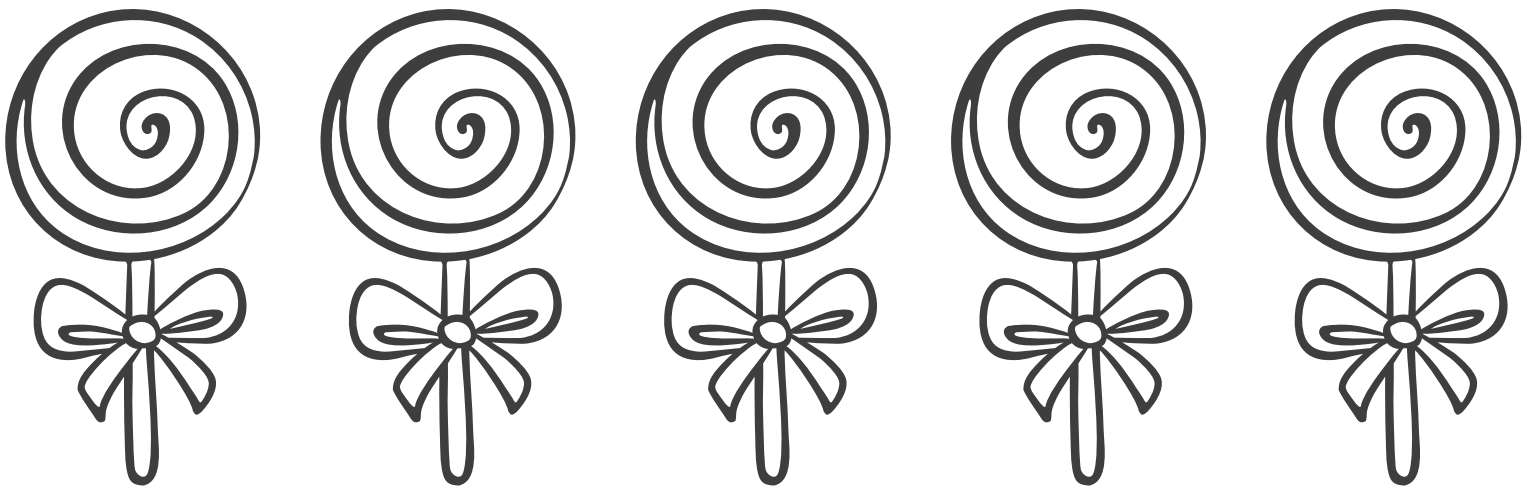


# DESIGN YOUR OWN Gingerbread House

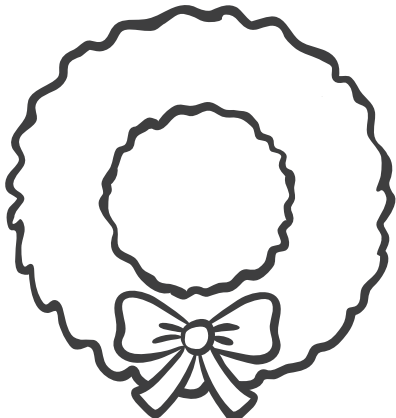
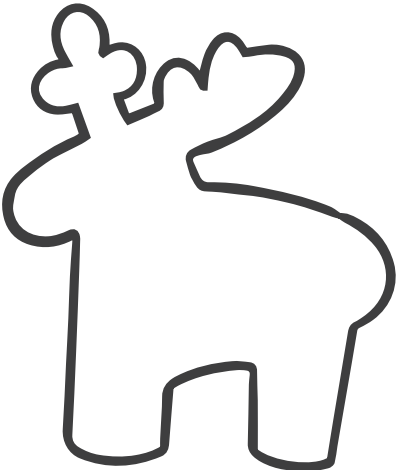
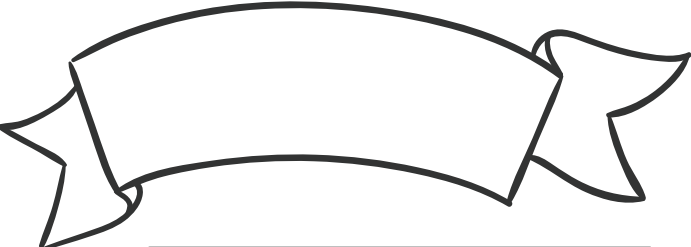
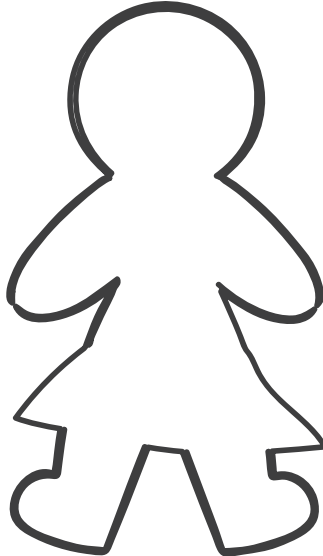
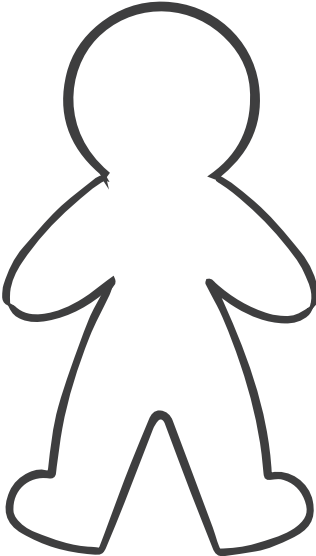
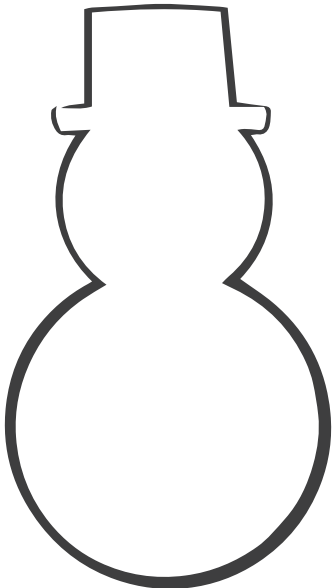
## DIRECTIONS

1. Color and cut-out each piece.
2. Assemble and design the gingerbread house to your liking.
3. For further detail, glue the assembled gingerbread house to a sheet of cardstock paper to add in details for the yard or winter background.

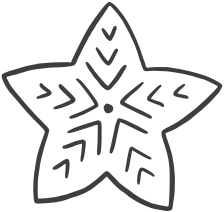
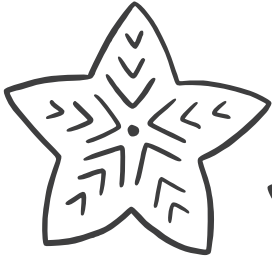
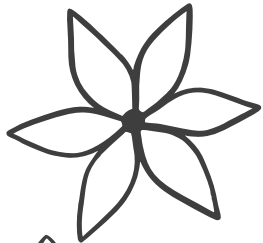
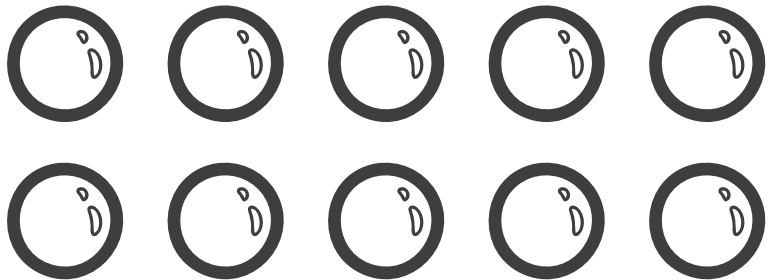
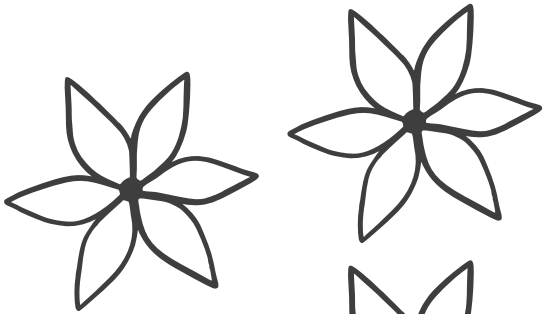
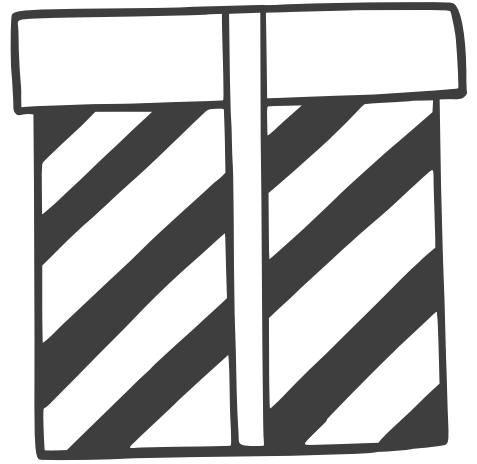
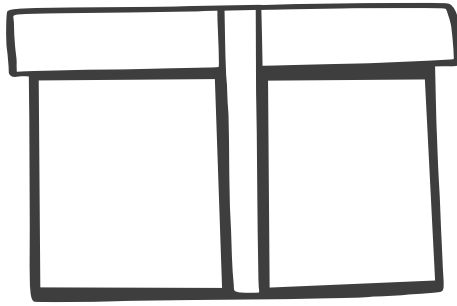
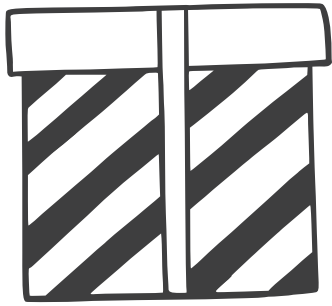
## HOUSE DECOR



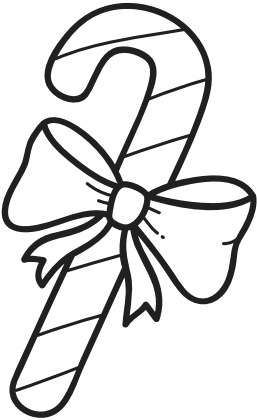
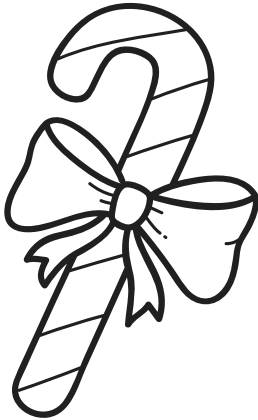
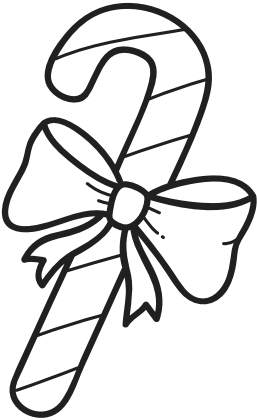
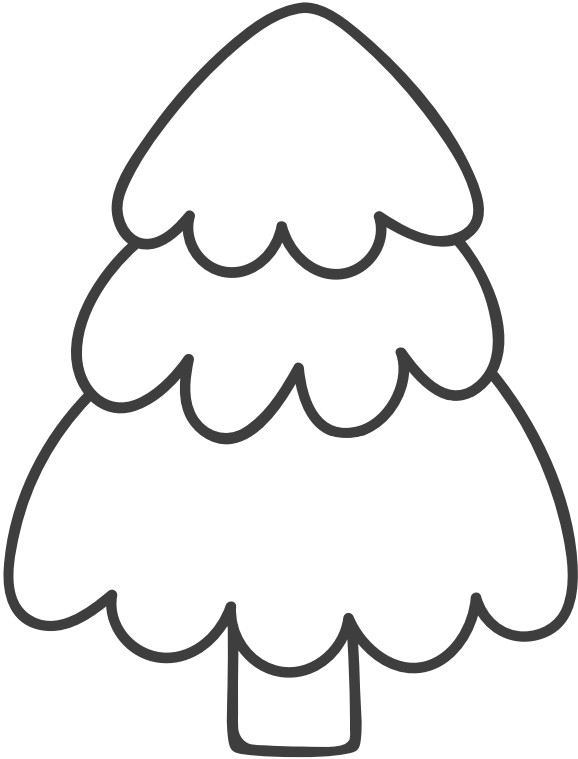
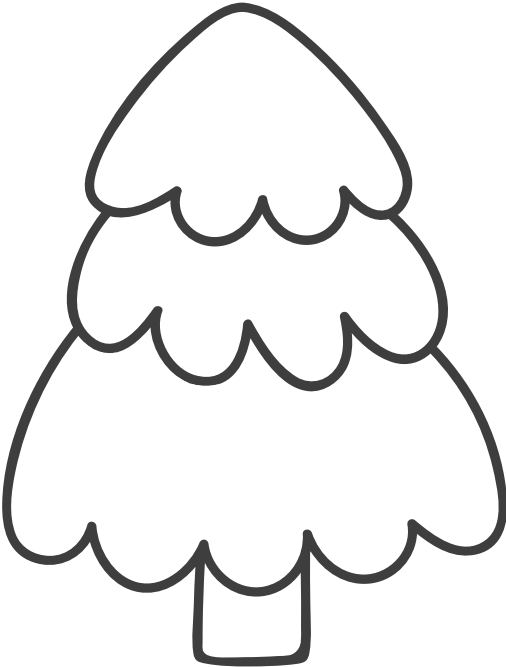
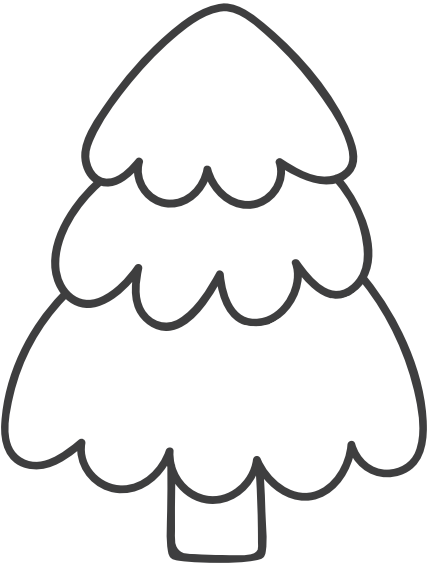
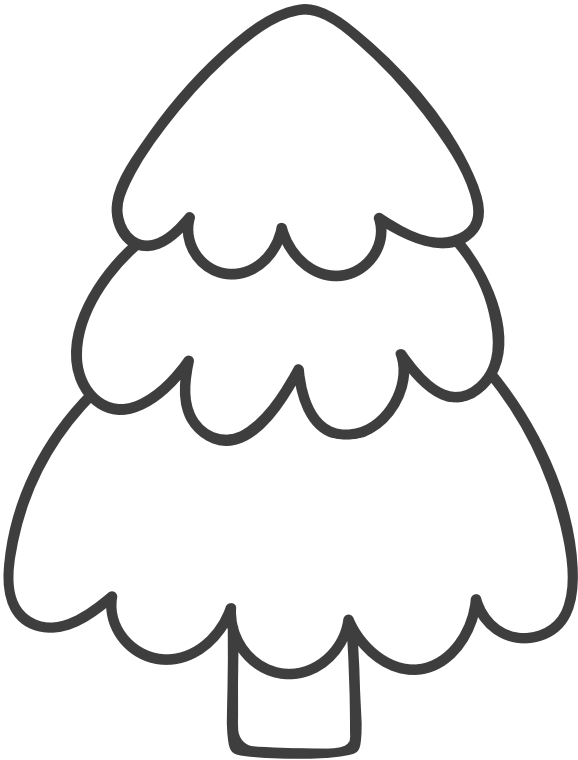
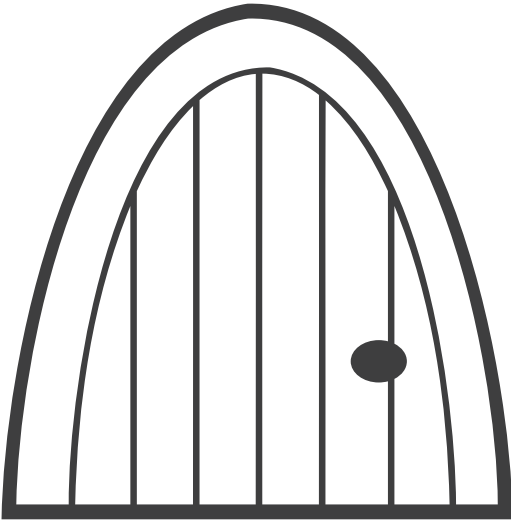
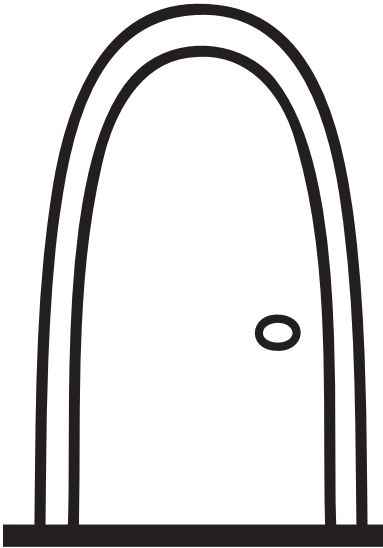
HOUSE DECOR



# HOUSE DECOR



GINGERBREAD DECOR



GINGERBREAD HOUSE

