

SCIENCE

Placement Test

▶ **200 – 800**

Science 200 – 800

Placement Tests

CONTENTS

Instructions	2
Science 200	3
Science 300	13
Science 400	23
Science 500	33
Science 600	43
Science 700	53
Science 800	63
Answer Keys	73
Student Placement Worksheet	88



804 N. 2nd Ave. E., Rock Rapids, IA 51246-1759

© MCMXCIX by Alpha Omega Publications, Inc. All rights reserved.
LIFEPAC is a registered trademark of Alpha Omega Publications, Inc.

All trademarks and/or service marks referenced in this material are the property of their respective owners. Alpha Omega Publications, Inc. makes no claim of ownership to any trademarks and/or service marks other than their own and their affiliates', and makes no claim of affiliation to any companies whose trademarks may be listed in this material, other than their own.

PLACEMENT TEST for the LIFEPAC CURRICULUM

Science 200 – 800

Instructions

This test is designed to aid the teacher or parent in proper placement of the student into the LIFEPAC curriculum. It has two sections: the Student Test and the Answer Key.

This is not a timed test and the student should be given an opportunity to answer each question adequately. If the student becomes bogged down and the test seems too difficult, skip to the next section. If the test is still too difficult, this child's academic skill level has been reached and testing may stop. Each test level should take no longer than one hour.

Testing should begin approximately two grade levels below the student's current or just completed grade level. For example, a student entering fifth grade [500] should begin testing at the third grade [300] level. (See Below.) Of course, a second or third grader could not test below the second grade level. This allows for proper grade level placement as well as identification of any learning gaps that the student may have.

Once the test has been administered, it is ready to be scored. The teacher or parent does all of the scoring. **Each section has 10 numbered questions. Each numbered question equals one point.** Use the Answer Key to mark all incorrect answers on the Student Test. Next record the total number of **correct** answers in the box beneath the LIFEPAC number in the right hand column. **When all tests have been graded, transfer the number correct by LIFEPAC to the Student Placement Worksheet on the back of the answer keys.** Then add the total number of points per grade level.

Test	Level	Test	Level
201 - 210	Level 2	601 - 610	Level 6
301 - 310	Level 3	701 - 710	Level 7
401 - 410	Level 4	801 - 810	Level 8
501 - 510	Level 5		

1. Some nonliving things are rocks, stars, and _____.
a. trees
b. dogs
c. the sun
2. Some living things are birds, fish, and _____.
a. plants
b. rocks
c. clouds
3. Living things need air, water, food, and _____.
a. trees
b. stars
c. light
4. God made _____.
a. cars
b. trees
c. toys
5. God made _____.
a. rivers
b. pictures
c. clocks
6. God made _____.
a. pencils
b. rabbits
c. desks
7. Man made _____.
a. bees
b. birds
c. boxes
8. Man made _____.
a. the sun
b. trains
c. the moon
9. Man made _____.
a. pencils
b. rocks
c. fish
10. A living object that can think and has a soul is _____.
a. rock
b. man
c. fish
- 10a.
b.
c.

1a.
b.
c.

2a.
b.
c.

3a.
b.
c.

4a.
b.
c.

5a.
b.
c.

6a.
b.
c.

7a.
b.
c.

8a.
b.
c.

9a.
b.
c.

10a.
b.
c.

- 1. Food for plants is made by _____.
 - a. stems
 - b. leaves
 - c. veins

- 2. Water is carried up the stem from the roots by _____.
 - a. leaves
 - b. stems
 - c. tubes

- 3. Water and food move through small tubes called _____.
 - a. roots
 - b. veins
 - c. stems

- 4. Plants need _____ to help the green work.
 - a. light
 - b. wind
 - c. animals

- 5. Plants need _____ to make food.
 - a. seeds
 - b. air
 - c. sleep

- 6. All plants need some _____ to live.
 - a. grass
 - b. wind
 - c. water

- 7. Plants live in different places called _____.
 - a. habits
 - b. habitats
 - c. bad habits

- 8. Most plants that live in the desert need very little _____.
 - a. water
 - b. sun
 - c. air

- 9. Plants can grow from a cutting, a root, or a _____.
 - a. rock
 - b. bulb
 - c. petal

- 10. Plants need air, sunshine, and _____.
 - a. wind
 - b. rest
 - c. water

1a.

b.

c.

2a.

b.

c.

3a.

b.

c.

4a.

b.

c.

5a.

b.

c.

6a.

b.

c.

7a.

b.

c.

8a.

b.

c.

9a.

b.

c.

10a.

b.

c.

- 1. Animals have keen _____ to help them survive.
 - a. senses 1a.
 - b. bones b.
 - c. zoos c.

- 2. When an animal growls, it tells you to _____ .
 - a. come close 2a.
 - b. keep away b.
 - c. feed it c.

- 3. A cat stays clean by _____ its fur.
 - a. pulling 3a.
 - b. combing b.
 - c. licking c.

- 4. A giraffe and a mouse are _____ size.
 - a. the same 4a.
 - b. a different b.
 - c. a big c.

- 5. Most small animals make their homes in _____ .
 - a. trees 5a.
 - b. boxes b.
 - c. holes c.

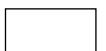
- 6. Birds are covered with feathers to help them _____ .
 - a. fly 6a.
 - b. walk b.
 - c. nest c.

- 7. All animals need _____ to breathe.
 - a. water 7a.
 - b. food b.
 - c. air c.

- 8. Some animals change _____ to stay safe.
 - a. feet 8a.
 - b. color b.
 - c. hands c.

- 9. God gave all animals _____ to help them live.
 - a. instinct 9a.
 - b. inside b.
 - c. into c.

- 10. Fish get oxygen through their _____ .
 - a. bills 10a.
 - b. gills b.
 - c. fins c.



- 1. All people have muscles connected to their _____.
 - a. food
 - b. bones
 - c. dogs1a.
b.
c.

- 2. All people have a _____ to pump blood.
 - a. head
 - b. bone
 - c. heart2a.
b.
c.

- 3. Little holes in the skin are called _____.
 - a. pores
 - b. bone
 - c. heart3a.
b.
c.

- 4. You need at least _____ hours of sleep each night to stay healthy.
 - a. 2
 - b. 20
 - c. 94a.
b.
c.

- 5. People need to eat from the _____ food groups everyday.
 - a. three
 - b. four
 - c. five5a.
b.
c.

- 6. People need to drink _____ to stay healthy.
 - a. water
 - b. pop
 - c. soda6a.
b.
c.

- 7. The group of people you live with is your _____.
 - a. friends
 - b. family
 - c. pets7a.
b.
c.

- 8. God gave you a mother and father to _____ you.
 - a. obey
 - b. harm
 - c. take care of8a.
b.
c.

- 9. People in your family help you because they _____ you.
 - a. live
 - b. love
 - c. grow9a.
b.
c.

- 10. Machines inside your body are called _____.
 - a. organs
 - b. bones
 - c. muscles10a.
b.
c.

1. Pets and plants need _____.
- a. care 1a.
- b. friends b.
- c. families c.
2. Pets and plants need air, food, and _____.
- a. flowers 2a.
- b. toys b.
- c. light c.
3. A pet needs to have _____ in a dish.
- a. water 3a.
- b. winter b.
- c. wait c.
4. A wild animal _____ a good pet.
- a. is 4a.
- b. is not b.
- c. are c.
5. A good house plant would be a _____.
- a. tree 5a.
- b. weed b.
- c. sweet potato c.
6. A good pet would be a _____.
- a. lion 6a.
- b. giraffe b.
- c. kitten c.
7. A pet is *not* _____.
- a. a toy 7a.
- b. an animal b.
- c. fun c.
8. If you take care of your plant, it will _____.
- a. green 8a.
- b. grow b.
- c. die c.
9. Do not feed your pet _____.
- a. anything 9a.
- b. too much b.
- c. enough c.
10. Some plants do not have _____.
- a. roots 10a.
- b. seeds b.
- c. flowers c.



- 1. Your five senses are seeing, touching, hearing, tasting and _____.
 - a. smelling
 - b. walking
 - c. talking

1a.
b.
c.

- 2. The sense that tells you that a flower is white and green is _____.
 - a. hearing
 - b. touching
 - c. seeing

2a.
b.
c.

- 3. The sense that tells you that your pillow is soft is _____.
 - a. touching
 - b. hearing
 - c. smelling

3a.
b.
c.

- 4. You taste sweet food at the _____ of your tongue.
 - a. tip
 - b. bottom
 - c. edge

4a.
b.
c.

- 5. You hear God's Word with your _____.
 - a. eyes
 - b. nose
 - c. ears

5a.
b.
c.

- 6. You use your senses to help you _____ God's world.
 - a. see
 - b. know
 - c. hear

6a.
b.
c.

- 7. A blind person reads by using _____.
 - a. a white cane
 - b. a dog
 - c. Braille

7a.
b.
c.

- 8. A person who cannot hear is _____.
 - a. deaf
 - b. blind
 - c. home

8a.
b.
c.

- 9. You can talk to a deaf person with your _____.
 - a. feet
 - b. hands
 - c. eyes

9a.
b.
c.

- 10. When someone talks I should _____.
 - a. talk
 - b. listen
 - c. touch

10a.
b.
c.

1. Red and yellow make the new color _____.
a. purple
b. green
c. orange
2. Blue and yellow make the new color _____.
a. purple
b. orange
c. green
3. If you want a darker color, you add _____.
a. yellow
b. black
c. white
4. Everything has a _____.
a. shape
b. leaf
c. thorn
5. A circle is round and _____.
a. square
b. pointed
c. flat
6. If you pull on a square, you have a _____.
a. rectangle
b. triangle
c. circle
7. A rock is _____.
a. soft
b. hard
c. fluffy
8. Paper is _____.
a. bumpy
b. sticky
c. smooth
9. Clothes are _____.
a. hard
b. rough
c. soft
10. Water is _____.
a. wet
b. dry
c. thick
- 1a.
b.
c.
- 2a.
b.
c.
- 3a.
b.
c.
- 4a.
b.
c.
- 5a.
b.
c.
- 6a.
b.
c.
- 7a.
b.
c.
- 8a.
b.
c.
- 9a.
b.
c.
- 10a.
b.
c.



- 1. We all live in an _____.
 - a. environment
 - b. envelope
 - c. everything

- 2. The environment has both living and _____ things.
 - a. animal
 - b. not living
 - c. plant

- 3. Each part of the environment is _____ the others.
 - a. the same as
 - b. connected to
 - c. greener than

- 4. Something that makes water, air, or ground dirty is called _____.
 - a. pollution
 - b. ecology
 - c. fuel

- 5. You help stop pollution by _____ old things.
 - a. cycling
 - b. recycling
 - c. eating

- 6. When you study how living things and nonliving things need each other, you learn about _____.
 - a. pollution
 - b. trash
 - c. ecology

- 7. You can take care of God’s world by _____.
 - a. picking up trash
 - b. throwing candy on the ground
 - c. making noise

- 8. Too much noise _____ the world.
 - a. helps
 - b. hurts
 - c. heals

- 9. Noah helped care for God’s world and save it from _____.
 - a. pollution
 - b. fire
 - c. The Flood

- 10. When you make new things out of old things, it is called _____.
 - a. cycle
 - b. recycling
 - c. melting

1a.

b.

c.

2a.

b.

c.

3a.

b.

c.

4a.

b.

c.

5a.

b.

c.

6a.

b.

c.

7a.

b.

c.

8a.

b.

c.

9a.

b.

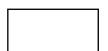
c.

10a.

b.

c.

1. Some animals can change their _____.
- a. color 1a.
 b. hands b.
 c. feet c.
2. People change as they _____.
- a. sing 2a.
 b. read b.
 c. grow up c.
3. Some animals' fur gets very thick in the _____.
- a. summer 3a.
 b. winter b.
 c. spring c.
4. In most places winter weather is _____.
- a. hot 4a.
 b. warm b.
 c. cold c.
5. Leaves change their color in _____.
- a. spring 5a.
 b. fall b.
 c. summer c.
6. "To everything there is a _____."
- a. season 6a.
 b. winter b.
 c. summer c.
7. God's love is _____.
- a. short 7a.
 b. everlasting b.
 c. long c.
8. God's Word _____.
- a. changes 8a.
 b. never changes b.
 c. always changes c.
9. God's love is like a _____.
- a. circle 9a.
 b. line b.
 c. square c.
10. All winter long some animals _____.
- a. eat 10a.
 b. drink b.
 c. sleep c.



1. The things you see around you make up your _____.
a. food
b. environment
c. toys
2. In the winter the maple tree _____.
a. buds
b. has leaves
c. has no leaves
3. You can take care of your environment by _____.
a. riding a bike
b. eating
c. washing windows
4. In the summer you can _____.
a. ice skate
b. swim
c. make a snowman
5. People can fight pollution by _____.
a. picking up trash
b. going to the store
c. eating
6. People grow from baby to child to _____.
a. worker
b. adult
c. kid
7. Your teeth will be healthy if you _____ them.
a. grind
b. paint
c. brush
8. A coat keeps you _____.
a. cold
b. warm
c. big
9. Things that you can smell have an _____.
a. odor
b. order
c. ears
10. Loud sounds can hurt your _____.
a. eyes
b. nose
c. ears
- 1a.
b.
c.
- 2a.
b.
c.
- 3a.
b.
c.
- 4a.
b.
c.
- 5a.
b.
c.
- 6a.
b.
c.
- 7a.
b.
c.
- 8a.
b.
c.
- 9a.
b.
c.
- 10a.
b.
c.



1. Two things that people have that animals do not have are _____.
 - a. hairs and nails 1a.
 - b. a conscience and a spirit b.
 - c. a conscience and a brain c.
 - d. a spirit and a tail d.
2. Both animals and people can _____.
 - a. be creative 2a.
 - b. talk with God b.
 - c. breathe and eat c.
 - d. be sorry when they have done something wrong d.
3. People, not animals _____.
 - a. have a skeleton 3a.
 - b. have a heart b.
 - c. need exercise c.
 - d. have a mind to figure things out d.
4. Digestion happens in the stomach and _____.
 - a. small intestines 4a.
 - b. heart b.
 - c. lungs c.
 - d. blood d.
5. The food the body does not need is _____.
 - a. digested again 5a.
 - b. passed off as waste b.
 - c. taken by the blood out of the body c.
 - d. taken back to the store d.
6. Food is taken to all parts of your body by the _____.
 - a. air 6a.
 - b. stomach b.
 - c. blood c.
 - d. lungs d.
7. All living things need _____.
 - a. nitrogen 7a.
 - b. oxygen b.
 - c. carbon dioxide c.
 - d. blood d.
8. Important to breathing are your nostrils, windpipe, and _____.
 - a. lungs 8a.
 - b. stomach b.
 - c. blood c.
 - d. exercise d.
9. To keep your body growing and changing you need air, food, water, _____.
 - a. jogging, and playing 9a.
 - b. oxygen, and blood b.
 - c. exercise, and rest c.
 - d. books, and sleep d.
10. To know how fast the heart beats, you feel the _____.
 - a. head 10a.
 - b. pulse b.
 - c. purse c.
 - d. nose d.



- 1. The part of a green plant that takes in water and minerals is the _____.
 - a. leaves
 - b. stem
 - c. seeds
 - d. roots
- 2. The part of a green plant that makes food and gives off oxygen is the _____.
 - a. leaves
 - b. stem
 - c. seeds
 - d. roots
- 3. The part of a green plant that takes water and minerals to the leaves is the _____.
 - a. leaves
 - b. stem
 - c. seeds
 - d. roots
- 4. In order to grow, plants need water, minerals, _____.
 - a. the right temperature, and rocks
 - b. the right temperature, and oxygen
 - c. carbon dioxide, and the right temperature
 - d. oxygen and soil
- 5. Green plants _____.
 - a. take in carbon dioxide and give off minerals
 - b. take in oxygen and give off water
 - c. take in minerals and give off carbon dioxide
 - d. take in carbon dioxide and give off oxygen
- 6. Green plants are green because they have _____.
 - a. oxygen
 - b. carbon dioxide
 - c. minerals
 - d. chlorophyll
- 7. A food that we eat that is really a seed is _____.
 - a. an onion
 - b. a carrot
 - c. a lima bean
 - d. celery
- 8. A strawberry plant can make a new strawberry plant by using its _____.
 - a. seeds
 - b. stems
 - c. roots
 - d. leaves
- 9. New plants can grow from seeds, stems, roots, or _____.
 - a. bulbs
 - b. bark
 - c. rocks
 - d. water
- 10. Temperature is measured by _____.
 - a. degrees
 - b. ounces
 - c. inches
 - d. feet

- 1a.
- b.
- c.
- d.
- 2a.
- b.
- c.
- d.
- 3a.
- b.
- c.
- d.
- 4a.
- b.
- c.
- d.
- 5a.
- b.
- c.
- d.
- 6a.
- b.
- c.
- d.
- 7a.
- b.
- c.
- d.
- 8a.
- b.
- c.
- d.
- 9a.
- b.
- c.
- d.
- 10a.
- b.
- c.
- d.



1. Reptiles are different from birds in their size, shape, _____.
 - a. color, and being cold-blooded
 - b. breathing, and being alive
 - c. color, and breathing
 - d. color, and having a heart
2. Animals that have a backbone belong to a group called _____.
 - a. mammals
 - b. vertebrates
 - c. insects
 - d. birds
3. Animals that have a head, thorax, abdomen, and antenna are called _____.
 - a. mammals
 - b. vertebrates
 - c. insects
 - d. birds
4. Two groups of vertebrates that are warm-blooded are _____.
 - a. reptiles and birds
 - b. fish and mammals
 - c. birds and amphibians
 - d. birds and mammals
5. Animals that are born alive (not from an egg) and make milk for their babies are called _____.
 - a. mammals
 - b. vertebrates
 - c. reptiles
 - d. whales
6. Fish, amphibians, reptiles, birds, and mammals are all _____.
 - a. invertebrates
 - b. insects
 - c. vertebrates
 - d. cold-blooded
7. The metamorphosis stages of a butterfly are _____.
 - a. egg, cocoon, adult
 - b. egg, larva, pupa, adult
 - c. egg, adult, egg, pupa
 - d. butterfly, cocoon, caterpillar, egg
8. The metamorphosis of egg, tadpole, and adult fits the _____.
 - a. vertebrates
 - b. reptiles
 - c. mammals
 - d. toads and frogs
9. Reptiles, birds, and mammals in order to breathe use _____.
 - a. gills
 - b. lungs
 - c. both gills and lungs
 - d. pores
10. To molt is to _____.
 - a. grow
 - b. multiply
 - c. shed
 - d. add

1a. b. c. d. 2a. b. c. d. 3a. b. c. d. 4a. b. c. d. 5a. b. c. d. 6a. b. c. d. 7a. b. c. d. 8a. b. c. d. 9a. b. c. d. 10a. b. c. d. 

1. The five food groups we should eat from each day are _____.
 - a. protein, eggs, grains, cereal, vegetables 1a.
 - b. dairy, protein, cheese, cereal, fruits b.
 - c. fruits, eggs, protein, grains, vegetables c.
 - d. fruits, vegetables, dairy, protein, grains d.
2. If you had corn, an apple, and milk for lunch, you still need _____.
 - a. an egg sandwich 2a.
 - b. a piece of pie b.
 - c. a glass of pop c.
 - d. a banana d.
3. Bananas belong to the fruits group. The item that belongs to the protein group is _____.
 - a. cottage cheese 3a.
 - b. oatmeal b.
 - c. rice c.
 - d. hamburger d.
4. Food helps you grow taller and _____.
 - a. gives you energy 4a.
 - b. makes you happy b.
 - c. helps you obey c.
 - d. makes your eyes blue d.
5. Food helps keep you warm and _____.
 - a. makes you sick 5a.
 - b. makes you get smarter b.
 - c. keeps you from getting sick c.
 - d. gives you a toothache d.
6. Spaghetti belongs to the food group called _____.
 - a. dairy 6a.
 - b. fruits b.
 - c. grains c.
 - d. protein d.
7. To keep you well and strong, you should drink each day four to six glasses of _____.
 - a. mud 7a.
 - b. pop b.
 - c. coffee c.
 - d. water d.
8. Brush your teeth the way they grow and each day wear _____.
 - a. clean clothes 8a.
 - b. new clothes b.
 - c. torn clothes c.
 - d. old clothes d.
9. One way to take good care of your eyes is _____.
 - a. to wear sunglasses at night 9a.
 - b. never eat carrots b.
 - c. read in dim light c.
 - d. read with good light coming over your shoulder d.
10. You should take a bath _____.
 - a. every day 10a.
 - b. once a week b.
 - c. once a year c.
 - d. once a month d.



1. What things are made of is called _____.
 - a. molecules
 - b. matter
 - c. chemistry
 - d. property
2. A chemist is a scientist who studies _____.
 - a. about plants
 - b. about matter
 - c. about stars
 - d. about animals
3. A chemist who believed in God and served Him was _____.
 - a. Isaac Newton
 - b. Ronald Boyd
 - c. Robert Boyle
 - d. Charles Brown
4. The shape and size of a ball are its _____.
 - a. matter
 - b. mass
 - c. gravity
 - d. properties
5. The properties of a tomato are _____.
 - a. soft, smooth, round
 - b. long, hard, light
 - c. hard, rough, heavy
 - d. liquid, clear, wet
6. The list of words that names matter and properties is _____.
 - a. horse, ball, desk, hair
 - b. ball, round, pencil, hard
 - c. clear, big, smooth, heavy
 - d. solid, liquid, gas, gravity
7. When matter has a fixed size and shape it is called a _____.
 - a. liquid
 - b. gas
 - c. solid
 - d. molecule
8. When matter is invisible (cannot be seen), it is usually a _____.
 - a. liquid
 - b. gas
 - c. solid
 - d. molecule
9. When the shape of matter changes but stays the same size, it is called a _____.
 - a. liquid
 - b. volume
 - c. invisible
 - d. molecules
10. When a liquid freezes it becomes a _____.
 - a. gas
 - b. drink
 - c. solid
 - d. rock

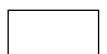
- 1a.
- b.
- c.
- d.
- 2a.
- b.
- c.
- d.
- 3a.
- b.
- c.
- d.
- 4a.
- b.
- c.
- d.
- 5a.
- b.
- c.
- d.
- 6a.
- b.
- c.
- d.
- 7a.
- b.
- c.
- d.
- 8a.
- b.
- c.
- d.
- 9a.
- b.
- c.
- d.
- 10a.
- b.
- c.
- d.



1. All sounds are _____.
 - a. loud noises 1a.
 - b. talking b.
 - c. vibrations c.
 - d. colors d.
2. Sounds travel in _____.
 - a. waves 2a.
 - b. light b.
 - c. color c.
 - d. tubes d.
3. Strong vibrations make _____.
 - a. soft sounds 3a.
 - b. loud sounds b.
 - c. no sounds c.
 - d. music d.
4. You hear when sound reaches your _____.
 - a. skin 4a.
 - b. brain b.
 - c. eyes c.
 - d. eardrum d.
5. When you hear, sound hits the eardrum, passes to three bones in the middle ear, then to the _____.
 - a. brain, the nerves, and the outer ear 5a.
 - b. nerves, the head, and the inner ear b.
 - c. inner ear, the eyes, and the head c.
 - d. inner ear, the nerves, and the brain d.
6. Sound causes your eardrum to _____.
 - a. get bigger 6a.
 - b. get smaller b.
 - c. vibrate c.
 - d. break d.
7. The larynx helps you _____.
 - a. hear 7a.
 - b. speak b.
 - c. see c.
 - d. taste d.
8. The larynx is in your _____.
 - a. ear 8a.
 - b. throat b.
 - c. eyes c.
 - d. tongue d.
9. A whisper sends sound waves that are _____.
 - a. strong 9a.
 - b. weak b.
 - c. straight c.
 - d. slower d.
10. Nerves take the message to the _____.
 - a. eardrum 10a.
 - b. brain b.
 - c. hand c.
 - d. heart d.



1. A day and a night together was first called a day by _____.
 - a. God 1a.
 - b. scientists b.
 - c. teachers c.
 - d. Adam d.
2. The earth rotates on its axis once every _____.
 - a. 365 days 2a.
 - b. 3 months b.
 - c. 24 hours c.
 - d. week d.
3. When you are having day, people on the other side of the earth are having _____.
 - a. summer 3a.
 - b. night b.
 - c. day, too c.
 - d. winter d.
4. The seasons in order are _____.
 - a. spring, summer, fall, winter 4a.
 - b. summer, fall, spring, winter b.
 - c. winter, spring, fall, summer c.
 - d. summer, winter, spring, fall d.
5. We have seasons because the earth is tilted on its axis and it _____.
 - a. rotates on its axis 5a.
 - b. revolves around the sun b.
 - c. moves up and down c.
 - d. is close to the sun d.
6. For the earth to revolve once around the sun, it takes _____.
 - a. 24 hours 6a.
 - b. one week b.
 - c. one month c.
 - d. 365 days d.
7. There are four time zones in the United States called _____.
 - a. Eastern, Central, Southern, Pacific 7a.
 - b. Central, Southern, Pacific, Atlantic b.
 - c. Pacific, Atlantic, Mountain, Desert c.
 - d. Eastern, Central, Mountain, Pacific d.
8. Each time zone is equal to _____.
 - a. two hours 8a.
 - b. one hour b.
 - c. three hours c.
 - d. ten minutes d.
9. There are time zones on the earth because _____.
 - a. the earth turns or rotates 9a.
 - b. the earth revolves around the sun b.
 - c. the earth stands still c.
 - d. the sun moves d.
10. You know the day, month, and year from a _____.
 - a. clock 10a.
 - b. calendar b.
 - c. map c.
 - d. ruler d.



1. Rocks are formed by _____.
 - a. heat and water
 - b. wind and pressure
 - c. heat and pressure
 - d. man and animals
2. Rocks are changed in size and shape by _____.
 - a. water, wind, plants, and birds
 - b. water, wind, heat and cold, and plants
 - c. man, wind, pressure, and chemists
 - d. matter, pressure, vibrations, and volcanoes
3. Many rocks were once _____.
 - a. granite
 - b. magma
 - c. pebbles
 - d. water
4. Granite is an example of _____.
 - a. metamorphic rock
 - b. sedimentary rock
 - c. igneous rock
 - d. lava rock
5. Limestone is an example of _____.
 - a. metamorphic rock
 - b. sedimentary rock
 - c. igneous rock
 - d. lava rock
6. Melted rock that flows from a volcano is called _____.
 - a. lava
 - b. magma
 - c. granite
 - d. igneous
7. Scientists who study rocks are called _____.
 - a. biologists
 - b. chemists
 - c. archaeologists
 - d. geologists
8. Rocks can be used for _____.
 - a. statues and food
 - b. statues and buildings
 - c. jewelry and plants
 - d. enjoyment and soup
9. The faces of four Presidents are carved out of granite at _____.
 - a. Mount Whitney
 - b. New York City
 - c. Yellowstone National Park
 - d. Mount Rushmore
10. Most rocks are made up of tiny crystals called _____.
 - a. ice
 - b. metals
 - c. minerals
 - d. salt

- 1a.
- b.
- c.
- d.
- 2a.
- b.
- c.
- d.
- 3a.
- b.
- c.
- d.
- 4a.
- b.
- c.
- d.
- 5a.
- b.
- c.
- d.
- 6a.
- b.
- c.
- d.
- 7a.
- b.
- c.
- d.
- 8a.
- b.
- c.
- d.
- 9a.
- b.
- c.
- d.
- 10a.
- b.
- c.
- d.



1. Light from the sun is changed into heat energy when the light is _____.
 - a. absorbed 1a.
 - b. transparent b.
 - c. heated c.
 - d. cooled d.
2. Rubbing your hands together quickly to make them warm is an example of heat energy caused by _____.
 - a. electricity 2a.
 - b. fuel b.
 - c. fire c.
 - d. friction d.
3. A fire makes heat energy from _____.
 - a. fuel and friction 3a.
 - b. oxygen and electricity b.
 - c. fuel and oxygen c.
 - d. static electricity and friction d.
4. Heat energy causes a solid to _____.
 - a. change to a liquid or a gas 4a.
 - b. stay the same b.
 - c. move from place to place c.
 - d. contract d.
5. Heat energy causes molecules to _____.
 - a. slow down 5a.
 - b. vibrate more quickly b.
 - c. stay together c.
 - d. radiate d.
6. A very good conductor of heat is _____.
 - a. wax 6a.
 - b. wood b.
 - c. copper c.
 - d. air d.
7. Keeping warm is a benefit of _____.
 - a. water 7a.
 - b. molecules b.
 - c. sleep c.
 - d. heat energy d.
8. Most of the heat on the earth comes from _____.
 - a. fire 8a.
 - b. the sun b.
 - c. fuel c.
 - d. electricity d.
9. Too much heat energy can cause problems of _____.
 - a. pollution and garbage 9a.
 - b. overweight and lack of food b.
 - c. pollution and sunburn c.
 - d. no water and too much fuel d.
10. To take up more space is to _____.
 - a. expand 10a.
 - b. contract b.
 - c. extract c.
 - d. conduct d.



1. The hot liquid rock that rises from deep within the earth is called _____.
 - a. granite
 - b. limestone
 - c. magma
 - d. igneous
2. An example of a gas is _____.
 - a. ice
 - b. water vapor
 - c. gum
 - d. dirt
3. In leap year, February has _____.
 - a. 28 days
 - b. 29 days
 - c. 30 days
 - d. 31 days
4. If it gets too cold, plants will _____.
 - a. die
 - b. grow faster
 - c. live longer
 - d. cry
5. A hearing aid makes the vibrations _____.
 - a. weaker
 - b. slower
 - c. faster
 - d. stronger
6. Molecules can only be seen with a _____.
 - a. telescope
 - b. microscope
 - c. pair of glasses
 - d. horoscope
7. Only humans have _____.
 - a. a body
 - b. a conscience
 - c. eyes
 - d. a nose
8. Matter has weight and takes up _____.
 - a. space
 - b. time
 - c. money
 - d. color
9. In order to breathe, fish use _____.
 - a. air tanks
 - b. pores
 - c. lungs
 - d. gills
10. Energy from the sun is _____.
 - a. fuel energy
 - b. light energy
 - c. radiant energy
 - d. electrical energy

- 1a.
- b.
- c.
- d.
- 2a.
- b.
- c.
- d.
- 3a.
- b.
- c.
- d.
- 4a.
- b.
- c.
- d.
- 5a.
- b.
- c.
- d.
- 6a.
- b.
- c.
- d.
- 7a.
- b.
- c.
- d.
- 8a.
- b.
- c.
- d.
- 9a.
- b.
- c.
- d.
- 10a.
- b.
- c.
- d.



1. The four main parts of a plant are the roots, stem, _____.
 - a. leaves, and bark
 - b. leaves, and flowers
 - c. leaves, and trunk
 - d. sepal, and branches
2. The part of a plant that holds up the plant is called the _____.
 - a. the leaves
 - b. the flowers
 - c. the stem
 - d. the branches
3. The part of a plant that holds the plant in the ground is _____.
 - a. the roots
 - b. the flowers
 - c. the stem
 - d. the branches
4. The plant takes in water and minerals from the soil through its _____.
 - a. flowers
 - b. leaves
 - c. root hairs
 - d. nose
5. Plants give off _____.
 - a. carbon dioxide
 - b. funny smells
 - c. oxygen
 - d. light
6. The bud of a plant is a part of _____.
 - a. the root
 - b. the pollen
 - c. the stem
 - d. the chlorophyll
7. The pea plant stores food in _____.
 - a. the seeds
 - b. the ground
 - c. the roots
 - d. the stem
8. The roots of beets and carrots are storehouses for _____.
 - a. bulbs
 - b. fruit
 - c. school
 - d. food
9. Plants make food in their _____.
 - a. flowers
 - b. leaves
 - c. fruit
 - d. seeds
10. Some plants store food they make in the fruit or in the _____.
 - a. roots
 - b. flowers
 - c. bark
 - d. ground

- 1a.
- b.
- c.
- d.
- 2a.
- b.
- c.
- d.
- 3a.
- b.
- c.
- d.
- 4a.
- b.
- c.
- d.
- 5a.
- b.
- c.
- d.
- 6a.
- b.
- c.
- d.
- 7a.
- b.
- c.
- d.
- 8a.
- b.
- c.
- d.
- 9a.
- b.
- c.
- d.
- 10a.
- b.
- c.
- d.



1. Cats are meat-eaters while sheep eat _____.
 - a. birds
 - b. cheeses
 - c. plants
 - d. people
2. Whales breathe through their _____.
 - a. mouth and gills
 - b. lungs and nose
 - c. lungs and gills
 - d. gills and skin
3. Animals with long, sharp teeth are usually _____.
 - a. meat-eaters
 - b. young
 - c. plant-eaters
 - d. old
4. Sheep have no _____.
 - a. wool on their head
 - b. cutting teeth on their upper jaw
 - c. tongue in their mouth
 - d. muscles in their body
5. The largest mammal is the _____.
 - a. shrew
 - b. elephant
 - c. shark
 - d. whale
6. Salmon are born in a _____.
 - a. cave
 - b. spawning ground
 - c. nest
 - d. hospital
7. An ostrich egg is kept warm by _____.
 - a. the male
 - b. the female
 - c. both the male and the female
 - d. a large wool blanket
8. Crickets sing with their _____.
 - a. mouths
 - b. tongues
 - c. legs
 - d. wings
9. A man-made place of protection for birds is a _____.
 - a. sanctuary
 - b. flock
 - c. net
 - d. extinct
10. A group that helps educate people about protecting wildlife is the _____.
 - a. library guild
 - b. Audubon Society
 - c. future farmers
 - d. church

- 1a.
- b.
- c.
- d.
- 2a.
- b.
- c.
- d.
- 3a.
- b.
- c.
- d.
- 4a.
- b.
- c.
- d.
- 5a.
- b.
- c.
- d.
- 6a.
- b.
- c.
- d.
- 7a.
- b.
- c.
- d.
- 8a.
- b.
- c.
- d.
- 9a.
- b.
- c.
- d.
- 10a.
- b.
- c.
- d.



1. The four God-given resources most living things need are _____.
 - a. food, water, air, and heat
 - b. light, water, fire, and gas
 - c. water, air, light, and soil
 - d. food, air, clothes, and homes
2. Light and heat come from _____.
 - a. the earth
 - b. the sun
 - c. within
 - d. the moon
3. Energy from the sun helps you grow through a _____.
 - a. food chain
 - b. water cycle
 - c. decay cycle
 - d. growth cycle
4. The missing part of this food chain is you, milk, cow, grass, and _____.
 - a. farmer
 - b. dairy
 - c. sun
 - d. trucks
5. Animals that feed on other animals are called _____.
 - a. producers
 - b. predators
 - c. ecologists
 - d. decomposers
6. To have a balance of nature in a community there must be _____.
 - a. predators
 - b. ecologists
 - c. people
 - d. plants
7. To keep living, all living things depend on _____.
 - a. themselves
 - b. animals
 - c. each other
 - d. the planets
8. Human communities need plant and animal communities to live, but human communities are special because _____.
 - a. man is made in God's image
 - b. man has legs
 - c. man has instinct
 - d. man can make his own food
9. To increase the water supply, you can _____.
 - a. replant forests
 - b. stop drinking water
 - c. drain the swamps
 - d. make it rain more often
10. National parks _____.
 - a. are only for rocks
 - b. preserve some natural treasures
 - c. are private
 - d. are a thing of the past

- 1a.
- b.
- c.
- d.
- 2a.
- b.
- c.
- d.
- 3a.
- b.
- c.
- d.
- 4a.
- b.
- c.
- d.
- 5a.
- b.
- c.
- d.
- 6a.
- b.
- c.
- d.
- 7a.
- b.
- c.
- d.
- 8a.
- b.
- c.
- d.
- 9a.
- b.
- c.
- d.
- 10a.
- b.
- c.
- d.



1. The ability to do work is called _____.
 - a. energy 1a.
 - b. gravity b.
 - c. matter c.
 - d. machines d.
2. The force that causes things which are in motion to stop is called _____.
 - a. energy 2a.
 - b. gravity b.
 - c. friction c.
 - d. work d.
3. Four kinds of energy are _____.
 - a. light, sound, heat, and water 3a.
 - b. light, water, heat, and snow b.
 - c. fire, water, ice and sun c.
 - d. light, sound, heat, and electricity d.
4. A pitcher standing still with a ball in his hand is an example of _____.
 - a. energy in action 4a.
 - b. stored action b.
 - c. stored energy c.
 - d. no energy d.
5. A ramp is a simple machine called _____.
 - a. a lever 5a.
 - b. a wedge b.
 - c. a screw c.
 - d. an inclined plane d.
6. The six simple machines are _____.
 - a. a wheel and axle, a pulley, a lever, a wedge, a screw, and an inclined plane 6a.
 - b. a wheel and axle, a fulcrum, a lever, a force, a wedge, and energy b.
 - c. a force, a wedge, energy, friction, gravity, and a pulley c.
 - d. a pulley, a block and tackle, a wheel and axle, a wheel-barrow, an inclined plane, and a screw d.
7. A doorknob is a _____.
 - a. pulley 7a.
 - b. wheel and axle b.
 - c. screw c.
 - d. force d.
8. Raising a flag on a flagpole is done by the use of a _____.
 - a. screw 8a.
 - b. hammer b.
 - c. ladder c.
 - d. pulley d.
9. A tractor is an example of a _____.
 - a. simple machine 9a.
 - b. complex machine b.
 - c. small machine c.
 - d. wedge d.
10. A complex machine used for transportation is a _____.
 - a. mixer 10a.
 - b. typewriter b.
 - c. horse c.
 - d. jet plane d.



1. Materials that carry electricity from place to place are called _____.
 - a. currents
 - b. insulators
 - c. conductors
 - d. electrons
2. Electricity will not flow through _____.
 - a. water
 - b. a circuit
 - c. a magnet
 - d. an insulator
3. The track along which electricity flows is called _____.
 - a. the round trip
 - b. the electric track
 - c. the circuit
 - d. the current
4. Electricity is used _____.
 - a. in homes
 - b. in stores
 - c. in hospitals
 - d. in all of these
5. Anything that a magnet will not attract is called _____.
 - a. magnetic
 - b. plants
 - c. nonmagnetic
 - d. metal
6. The ends of a magnet are called its _____.
 - a. spikes
 - b. current
 - c. bars
 - d. poles
7. When electric current passes through a coiled wire, it makes _____.
 - a. a spark
 - b. an electromagnet
 - c. a generator
 - d. an electric cell
8. A doorbell is made with _____.
 - a. a generator
 - b. a fuse
 - c. an electromagnet
 - d. an electrode
9. An electrical switch is a _____.
 - a. coil
 - b. circuit breaker
 - c. conductor
 - d. magnetic pole
10. Electric cells are used to make _____.
 - a. lightning
 - b. static electricity
 - c. toasters
 - d. current electricity

- 1a.
- b.
- c.
- d.
- 2a.
- b.
- c.
- d.
- 3a.
- b.
- c.
- d.
- 4a.
- b.
- c.
- d.
- 5a.
- b.
- c.
- d.
- 6a.
- b.
- c.
- d.
- 7a.
- b.
- c.
- d.
- 8a.
- b.
- c.
- d.
- 9a.
- b.
- c.
- d.
- 10a.
- b.
- c.
- d.



1. The two types of thermometers most commonly used are _____.
 - a. Fahrenheit and Central
 - b. Celsius and Centigrade
 - c. Celsius and Fahrenheit
 - d. water and gas
2. Water boils at _____.
 - a. 32° F
 - b. 100° C
 - c. 0° C
 - d. 100° F
3. When heat is applied to ice, it will _____.
 - a. turn to snow
 - b. stick to whatever it is sitting on
 - c. turn to water and evaporate
 - d. turn to gas
4. Food is carried to all parts of the bodies of animals and plants by _____.
 - a. blood
 - b. water
 - c. evaporation
 - d. drinking
5. If a material will dissolve, it is _____.
 - a. insoluble
 - b. 32° F
 - c. a suspension
 - d. soluble
6. A material that will not dissolve in water is _____.
 - a. salt
 - b. sugar
 - c. oil
 - d. coffee
7. Anything that has weight and takes up space is called _____.
 - a. atoms
 - b. elements
 - c. molecules
 - d. matter
8. Air is usually found as _____.
 - a. a solid
 - b. a liquid
 - c. a gas
 - d. an element
9. The building blocks of molecules are called _____.
 - a. elements
 - b. liquids
 - c. moles
 - d. atoms
10. Hydrogen and oxygen are _____.
 - a. liquids
 - b. elements
 - c. properties
 - d. solutions

- 1a.
- b.
- c.
- d.
- 2a.
- b.
- c.
- d.
- 3a.
- b.
- c.
- d.
- 4a.
- b.
- c.
- d.
- 5a.
- b.
- c.
- d.
- 6a.
- b.
- c.
- d.
- 7a.
- b.
- c.
- d.
- 8a.
- b.
- c.
- d.
- 9a.
- b.
- c.
- d.
- 10a.
- b.
- c.
- d.



1. We live in an ocean of _____.
 - a. fog
 - b. water
 - c. air
 - d. steam
2. The layer of ozone in the earth's atmosphere protects people against _____.
 - a. harmless sun rays
 - b. beneficial sun rays
 - c. ultraviolet sun rays
 - d. visible sun rays
3. Weather changes are sometimes caused by _____.
 - a. temperature, air pressure, air movement, and moisture
 - b. temperature, mothers, and weathermen
 - c. electrons, air pressure, and magnetism
 - d. moisture, gravity, and rotation of the earth
4. To water the earth God provided the _____.
 - a. ozone
 - b. lightning
 - c. decay cycle
 - d. water cycle
5. A storm of snow-carrying high winds is a _____.
 - a. hailstorm
 - b. hurricane
 - c. blizzard
 - d. rainstorm
6. Heavy winds carrying sand is a _____.
 - a. hailstorm
 - b. sandstorm
 - c. blizzard
 - d. tornado
7. When forces of weather change the earth's surface, these changes are called _____.
 - a. weather changes
 - b. geographic changes
 - c. erosion
 - d. day and night
8. The moon has no _____.
 - a. dust
 - b. rocks
 - c. light
 - d. atmosphere
9. To predict or forecast the weather, weathermen use _____.
 - a. atmosphere
 - b. guesses
 - c. instruments
 - d. air pressure
10. Air pressure is measured with a _____.
 - a. thermometer
 - b. wind vane
 - c. anemometer
 - d. barometer

- 1a.
- b.
- c.
- d.
- 2a.
- b.
- c.
- d.
- 3a.
- b.
- c.
- d.
- 4a.
- b.
- c.
- d.
- 5a.
- b.
- c.
- d.
- 6a.
- b.
- c.
- d.
- 7a.
- b.
- c.
- d.
- 8a.
- b.
- c.
- d.
- 9a.
- b.
- c.
- d.
- 10a.
- b.
- c.
- d.



1. The two planets nearest the sun are _____.
 - a. Mars and Mercury 1a.
 - b. Mercury and Mars b.
 - c. Mercury and Venus c.
 - d. Mercury and Earth d.
2. The farthest planet from the sun is _____.
 - a. Jupiter 2a.
 - b. Neptune b.
 - c. Mars c.
 - d. Saturn d.
3. The center of the solar system is _____.
 - a. the moon 3a.
 - b. the earth b.
 - c. the sun c.
 - d. the galaxy d.
4. The universe began when _____.
 - a. gravity started it 4a.
 - b. God created it b.
 - c. stars were born c.
 - d. it just happened d.
5. Heavenly bodies that look like a star with a tail are called _____.
 - a. asteroids 5a.
 - b. comets b.
 - c. moons c.
 - d. meteors d.
6. Small planet like objects in orbit between Mars and Jupiter are _____.
 - a. asteroids 6a.
 - b. comets b.
 - c. moons c.
 - d. meteors d.
7. A group of stars that seem to make a picture in the sky is called _____.
 - a. an asteroid 7a.
 - b. a galaxy b.
 - c. the Milky Way c.
 - d. a constellation d.
8. The Wise Men were led to Jesus by _____.
 - a. a constellation 8a.
 - b. an angel b.
 - c. the Star of the East c.
 - d. the Bible d.
9. Galileo and Lippershey are famous astronomers who made the first _____.
 - a. satellites 9a.
 - b. telescopes b.
 - c. radios c.
 - d. spectroscopes d.
10. The Bible says that in the future _____.
 - a. we will all live on Mars 10a.
 - b. the moon will split in two b.
 - c. there will be a new heaven and a new earth c.
 - d. the sun will revolve around the earth d.



1. The amount of the earth's surface that is covered by water is _____.
 - a. one-fourth
 - b. one-half
 - c. almost three-fourths
 - d. all of it
2. All weather occurs in the _____.
 - a. troposphere
 - b. ionosphere
 - c. stratosphere
 - d. sphere
3. The very center of the earth is called the _____.
 - a. crust
 - b. mantle
 - c. core
 - d. hydrosphere
4. The surface of the earth is called the _____.
 - a. mantle
 - b. core
 - c. crust
 - d. hydrosphere
5. The earth is shaped like _____.
 - a. a cylinder
 - b. a sphere
 - c. an oval
 - d. an eclipse
6. At the poles of the earth, the earth's forces are greater. These forces are called _____.
 - a. mechanical and electrical
 - b. gravity and energy
 - c. magnetism and gravity
 - d. water and heat
7. God created animals and man on the _____.
 - a. first day of Creation
 - b. sixth day of Creation
 - c. seventh day of Creation
 - d. fourth day of Creation
8. God created day and night on the _____.
 - a. first day of Creation
 - b. sixth day of Creation
 - c. third day of Creation
 - d. fourth day of Creation
9. A crack in the earth's crust where layers of rocks have slipped or moved is called _____.
 - a. valley
 - b. mountain
 - c. volcano
 - d. fault
10. When part of the earth moves quickly and shakes, it is called _____.
 - a. an earthquake
 - b. a fault
 - c. a volcano
 - d. a rockslide

- 1a.
- b.
- c.
- d.
- 2a.
- b.
- c.
- d.
- 3a.
- b.
- c.
- d.
- 4a.
- b.
- c.
- d.
- 5a.
- b.
- c.
- d.
- 6a.
- b.
- c.
- d.
- 7a.
- b.
- c.
- d.
- 8a.
- b.
- c.
- d.
- 9a.
- b.
- c.
- d.
- 10a.
- b.
- c.
- d.



1. Living things in order to live need air, water, and _____.
 - a. clothes
 - b. houses
 - c. food
 - d. exercise
2. Bees live in a _____.
 - a. house
 - b. pond
 - c. hive
 - d. hole
3. God has given to many animals a guide called _____.
 - a. flight
 - b. fear
 - c. instinct
 - d. extinct
4. The study of how living things affect their environment and each other is called _____.
 - a. biology
 - b. ecology
 - c. geology
 - d. archaeology
5. Two or more simple machines put together to make one is a _____.
 - a. big machine
 - b. bad idea
 - c. complex machine
 - d. wheel and axle
6. A machine that makes electricity is _____.
 - a. a conductor
 - b. an insulator
 - c. a generator
 - d. a magnet
7. Solid, liquid, and gas are three forms of _____.
 - a. elements
 - b. matter
 - c. solvents
 - d. molecules
8. The wearing down of rocks and soil by weather is called _____.
 - a. erosion
 - b. irrigation
 - c. fertilizer
 - d. a cycle
9. A false science that says the stars can tell the future is called _____.
 - a. astronomy
 - b. astrology
 - c. biology
 - d. gravity
10. The force that pulls everything toward the center of the earth is called _____.
 - a. electricity
 - b. magnetism
 - c. rotation
 - d. gravity

- 1a.
- b.
- c.
- d.
- 2a.
- b.
- c.
- d.
- 3a.
- b.
- c.
- d.
- 4a.
- b.
- c.
- d.
- 5a.
- b.
- c.
- d.
- 6a.
- b.
- c.
- d.
- 7a.
- b.
- c.
- d.
- 8a.
- b.
- c.
- d.
- 9a.
- b.
- c.
- d.
- 10a.
- b.
- c.
- d.



1. The unit of life for all living things is called a _____.
 - a. membrane 1a.
 - b. living organism b.
 - c. cell c.
 - d. breath d.
2. The living substance in a cell is called _____.
 - a. cytoplasm 2a.
 - b. blood b.
 - c. nucleus c.
 - d. nutrients d.
3. Two types of cells are plant cells and _____ cells.
 - a. nonliving 3a.
 - b. large b.
 - c. organic c.
 - d. animal d.
4. Cells which carry messages about what is happening inside and outside of the body are called _____.
 - a. cell walls 4a.
 - b. nerve cells b.
 - c. muscle cells c.
 - d. blood cells d.
5. Both plants and animals are protected by _____.
 - a. shade 5a.
 - b. water b.
 - c. epithelial tissue c.
 - d. blood cells d.
6. To each organism God provided cells of various sizes and _____.
 - a. colors 6a.
 - b. shapes b.
 - c. origins c.
 - d. energy d.
7. Psalm 139:14 says that we are _____ made.
 - a. accidentally 7a.
 - b. strongly b.
 - c. wonderfully c.
 - d. quickly d.
8. God gives man physical life through cells and eternal life through _____.
 - a. faith 8a.
 - b. cells b.
 - c. church c.
 - d. good deeds d.
9. Plants receive and use energy through a process called _____.
 - a. breathing 9a.
 - b. respiration b.
 - c. food c.
 - d. photosynthesis d.
10. The cycle of energy which makes both plant and animal life possible is called the _____ cycle.
 - a. oxygen 10a.
 - b. carbon b.
 - c. die c.
 - d. organic d.



1. The main stages in the life cycle of a plant are beginning stage, growth stage, and _____.
 - a. life stage
 - b. adult stage
 - c. ending stage
 - d. pollen stage
2. Choose the correct statement and write its letter in the blank. _____.
 - a. A plant can be prevented from completing all stages in the life cycle.
 - b. All plants have the same length of life cycle.
 - c. All plants reproduce the same way.
 - d. New plants are not important.
3. Some trees bear seeds inside fruit and some bear seeds inside _____.
 - a. leaves
 - b. pollen
 - c. cones
 - d. stalks
4. God has provided wind, bees, and insects to carry _____.
 - a. pollen
 - b. eggs
 - c. leaves
 - d. cones
5. Spores are formed in _____.
 - a. ovaries
 - b. anthers
 - c. spore cases
 - d. roots
6. Fungus plants are made up of tiny threads called _____.
 - a. spores
 - b. roots
 - c. hairs
 - d. hyphae
7. Algae is reproduced through _____.
 - a. mitosis
 - b. budding
 - c. more spores
 - d. fungus
8. One-celled plants are reproduced by _____.
 - a. taking material from the parent cell
 - b. seeds
 - c. spores
 - d. cones
9. The main difference among plants is _____.
 - a. color
 - b. the way they grow
 - c. the way they are reproduced
 - d. the way they take in food
10. All plants were created by _____.
 - a. mitosis
 - b. God
 - c. seeds
 - d. budding

- 1a.
- b.
- c.
- d.
- 2a.
- b.
- c.
- d.
- 3a.
- b.
- c.
- d.
- 4a.
- b.
- c.
- d.
- 5a.
- b.
- c.
- d.
- 6a.
- b.
- c.
- d.
- 7a.
- b.
- c.
- d.
- 8a.
- b.
- c.
- d.
- 9a.
- b.
- c.
- d.
- 10a.
- b.
- c.
- d.



1. Animals that do not have backbones are called _____.
 - a. hosts 1a.
 - b. plants b.
 - c. vertebrates c.
 - d. invertebrates d.
2. Flies, earthworms, and snails are examples of _____.
 - a. vertebrates 2a.
 - b. invertebrates b.
 - c. mollusks c.
 - d. fungi d.
3. Egg-laying invertebrates begin life from _____.
 - a. mitosis 3a.
 - b. pollen b.
 - c. an egg cell c.
 - d. carbon d.
4. The wormlike form in some insect life cycles is called _____.
 - a. larva 4a.
 - b. nymph b.
 - c. adult c.
 - d. an egg d.
5. Two kinds of invertebrates are one-celled invertebrates and _____ invertebrates.
 - a. two-celled 5a.
 - b. egg-laying b.
 - c. furry c.
 - d. crawling d.
6. One-celled animals have no _____.
 - a. nucleus 6a.
 - b. life cycle b.
 - c. arms, legs, eyes, or heart c.
 - d. cytoplasm d.
7. All vertebrates begin their lives as fertilized _____.
 - a. egg cells 7a.
 - b. spores b.
 - c. sperms c.
 - d. larvae d.
8. The life stages of vertebrates are adult stage, growth stage, and _____.
 - a. embryo stage 8a.
 - b. egg stage b.
 - c. beginning stage c.
 - d. last stage d.
9. The vertebrates which lay eggs outside their bodies are fish, amphibians, reptiles, and _____.
 - a. insects 9a.
 - b. mollusks b.
 - c. mammals c.
 - d. birds d.
10. All mammals have fur or _____.
 - a. hair 10a.
 - b. feathers b.
 - c. scales c.
 - d. gills d.



1. Two cycles in nature's web of life are the carbon cycle and the _____ cycle.
 - a. energy 1a.
 - b. water b.
 - c. food c.
 - d. heat d.
2. Animals get water by drinking it or getting it from _____.
 - a. sweating 2a.
 - b. crying b.
 - c. the food they eat c.
 - d. dew d.
3. An organism that makes its own food is a _____.
 - a. producer 3a.
 - b. consumer b.
 - c. decomposer c.
 - d. factory d.
4. Second-order consumers eat mostly _____.
 - a. plants 4a.
 - b. animals b.
 - c. decomposers c.
 - d. soil d.
5. Wolves are _____.
 - a. first-order consumers 5a.
 - b. second-order consumers b.
 - c. decomposers c.
 - d. producers d.
6. Changes in the amount of _____ cause big changes in the prairie balance of nature.
 - a. carbon dioxide 6a.
 - b. rainfall b.
 - c. minerals c.
 - d. fertilizers d.
7. Man has affected the balance of nature by _____.
 - a. eating 7a.
 - b. sleeping b.
 - c. drinking c.
 - d. polluting d.
8. Man has affected the balance of nature by killing animals and _____.
 - a. clearing plants and trees from the land 8a.
 - b. feeding animals b.
 - c. eating too much c.
 - d. giving weather reports d.
9. Humans were given responsibility over all other living things by _____.
 - a. nature 9a.
 - b. law b.
 - c. God c.
 - d. common sense d.
10. One way to be a careful steward would be to _____.
 - a. conserve water 10a.
 - b. drive a car a lot b.
 - c. disobey hunting and fishing laws c.
 - d. litter d.



1. Anything that is moving has _____ energy.
 - a. potential 1a.
 - b. stored b.
 - c. kinetic c.
 - d. high d.
2. All the energy for the earth is provided by _____.
 - a. wind 2a.
 - b. the sun b.
 - c. storage c.
 - d. movement d.
3. A burning leaf gives off _____ energy.
 - a. heat 3a.
 - b. mechanical b.
 - c. potential c.
 - d. sound d.
4. Lightning is a type of _____ energy.
 - a. potential 4a.
 - b. chemical b.
 - c. electrical c.
 - d. mechanical d.
5. For work to happen, _____ is needed.
 - a. energy 5a.
 - b. a person b.
 - c. the sun c.
 - d. good weather d.
6. Jesus' work in John, Chapter 6, was _____ work.
 - a. spiritual 6a.
 - b. mechanical b.
 - c. potential c.
 - d. electrical d.
7. Burning can be _____ for useful work.
 - a. misused 7a.
 - b. controlled b.
 - c. wasted c.
 - d. stopped d.
8. A machine which controls burning to provide useful work is a _____.
 - a. furnace 8a.
 - b. battery b.
 - c. garden hose c.
 - d. telephone d.
9. Nuclear energy presents three main problems. Natural elements which are sources for nuclear fuel can be used up. The waste water from nuclear plants is very hot. The third problem is that _____.
 - a. few people are qualified to work in the plants 9a.
 - b. the rays given off by atomic reaction can be dangerous b.
 - c. there is a law against using nuclear power c.
 - d. nuclear power is not very useful d.
10. One of the most pressing energy problems today is the shortage of _____.
 - a. people 10a.
 - b. oil b.
 - c. money c.
 - d. laws d.



1. The earth before the Flood had _____ plants and animals according to the Bible.
 - a. only a few 1a.
 - b. two of each kind of b.
 - c. a great number of c.
 - d. no d.
2. According to the Bible, after it stopped raining, the Flood water covered the earth _____.
 - a. forty days and forty nights 2a.
 - b. nearly a year b.
 - c. one day c.
 - d. 100 years d.
3. Petrified wood and fossilized leaves show that earlier plants were _____.
 - a. very small 3a.
 - b. not green b.
 - c. not plentiful c.
 - d. of great size d.
4. Oil was formed from animals. Coal was formed from _____.
 - a. plants and trees 4a.
 - b. animals b.
 - c. sunlight c.
 - d. oil d.
5. After the Flood the world population _____.
 - a. disappeared 5a.
 - b. decreased b.
 - c. grew c.
 - d. learned to swim d.
6. The Bible tells about differences on the earth after the Flood _____.
 - a. in great detail 6a.
 - b. in clues but not much detail b.
 - c. in several books c.
 - d. in the New Testament d.
7. Fossils show that some animals _____.
 - a. had not seen rain 7a.
 - b. are extinct b.
 - c. liked the cold c.
 - d. made noise d.
8. To learn about changes in the earth, scientists study land movement, fossils, and _____.
 - a. glaciers 8a.
 - b. deserts b.
 - c. crops c.
 - d. roots d.
9. Physical records indicate that the continents are drifting. The event which could have started the continents drifting could be _____.
 - a. the Flood 9a.
 - b. earthquakes b.
 - c. hurricanes c.
 - d. pollution d.
10. An important cycle which started after the Flood is the _____.
 - a. water cycle 10a.
 - b. carbon cycle b.
 - c. life cycle c.
 - d. breathing cycle d.



1. When minerals have become hardened into rock forming a fossil, the fossil is called a(n) _____.
- a. print fossil
b. original-remains fossil
c. petrified fossil
d. carbonized fossil
2. Dinosaur foot prints are an example of _____.
- a. print fossils
b. original-remains fossils
c. petrified fossils
d. carbonized fossils
3. Original remains fossils have been protected from decay by amber, permafrost, oil, and _____.
- a. coal
b. sediment
c. wood
d. weather
4. Petrified bones, teeth, shells, and wood are hardened minerals that have replaced _____.
- a. sediment
b. the living cells
c. fossils
d. decay
5. Petrified bones, tusks, and teeth were found in _____.
- a. Alaska
b. Arizona
c. Massachusetts
d. Ireland
6. A well-known fossil deposit is located in Los Angeles, California. More than two hundred kinds of animals and plants have been identified here. This fossil deposit is known as the _____.
- a. Los Angeles deposit
b. LaBrae Tar Pits
c. Cumberland Bone Cave
d. Gobi Desert
7. Some scientists, who believe the earth is millions of years old, classify fossils according to _____.
- a. geological age
b. the Flood
c. types
d. carbonization
8. Fossil identification is made difficult when _____.
- a. complete fossils are found
b. parts of fossils are broken or missing
c. trained people look for them
d. you have to dig for them
9. Teeth can give clues about a fossilized animal's _____.
- a. eating habits
b. brain size
c. offspring
d. age
10. If good inferences are made from fossils, _____ can take place.
- a. science
b. tests
c. reconstruction
d. building of museums

- 1a.
b.
c.
d.
- 2a.
b.
c.
d.
- 3a.
b.
c.
d.
- 4a.
b.
c.
d.
- 5a.
b.
c.
d.
- 6a.
b.
c.
d.
- 7a.
b.
c.
d.
- 8a.
b.
c.
d.
- 9a.
b.
c.
d.
- 10a.
b.
c.
d.



1. The earth is shaped like _____.
 - a. a sphere 1a.
 - b. an oblong b.
 - c. a football c.
 - d. a square d.
2. The earth's landforms are _____.
 - a. never changing 2a.
 - b. constantly changing b.
 - c. not important c.
 - d. all alike d.
3. The outer layer of the earth is called the _____.
 - a. shell 3a.
 - b. mantle b.
 - c. crust c.
 - d. skin d.
4. Core material is thought to be mostly _____.
 - a. iron and steel 4a.
 - b. steel and nickel b.
 - c. nickel and iron c.
 - d. lead and zinc d.
5. Living bodies contain minerals. Minerals are not alive. When the bodies die, minerals can return to the earth. In Genesis 3:19 the Bible tells us, "...for _____ thou art, and to _____ you shall return."
 - a. dust, dust 5a.
 - b. water, water b.
 - c. flesh, flesh c.
 - d. bones, bones d.
6. Granite and basalt are _____ rocks.
 - a. metamorphic 6a.
 - b. igneous b.
 - c. sedimentary c.
 - d. elementary d.
7. Small pieces of rocks often break down further through _____.
 - a. weathering 7a.
 - b. irrigation b.
 - c. folding c.
 - d. volcanoes d.
8. A glacier is a _____.
 - a. fierce storm 8a.
 - b. lava eruption b.
 - c. snow storm c.
 - d. large moving mass of ice and snow d.
9. Weathering is a force that _____.
 - a. builds landforms 9a.
 - b. wears away landforms b.
 - c. has little effect on landforms c.
 - d. never occurs d.
10. Recent volcanoes have left landforms called _____.
 - a. trees 10a.
 - b. cone structures b.
 - c. glaciers c.
 - d. erosion d.



1. All matter takes up space. This property is called _____.
 - a. weight
 - b. presence
 - c. volume
 - d. brittleness
2. Some matter has the property to _____.
 - a. fly
 - b. conduct
 - c. create
 - d. see
3. Matter can be in the form of a solid, liquid, or _____.
 - a. gas
 - b. color
 - c. powder
 - d. spray
4. Chemical changes in matter result from burning and _____.
 - a. melting
 - b. freezing
 - c. rusting
 - d. raining
5. The smallest part of matter that can still exist without a chemical change is called a _____.
 - a. molecule
 - b. cell
 - c. microscope
 - d. particle
6. All molecules are always _____.
 - a. still
 - b. green
 - c. in motion
 - d. learning
7. One of the reasons we have seasons is because the earth is tilted on its _____.
 - a. axle
 - b. axis
 - c. equator
 - d. latitudes
8. The water cycle functions because the matter in water changes _____.
 - a. forms
 - b. properties
 - c. minerals
 - d. colors
9. God's design for earth included _____.
 - a. controls over it
 - b. careless creation
 - c. too much matter
 - d. too little matter
10. Water and land to support life were provided by _____.
 - a. nature
 - b. erosion
 - c. God
 - d. matter

- 1a.
- b.
- c.
- d.
- 2a.
- b.
- c.
- d.
- 3a.
- b.
- c.
- d.
- 4a.
- b.
- c.
- d.
- 5a.
- b.
- c.
- d.
- 6a.
- b.
- c.
- d.
- 7a.
- b.
- c.
- d.
- 8a.
- b.
- c.
- d.
- 9a.
- b.
- c.
- d.
- 10a.
- b.
- c.
- d.

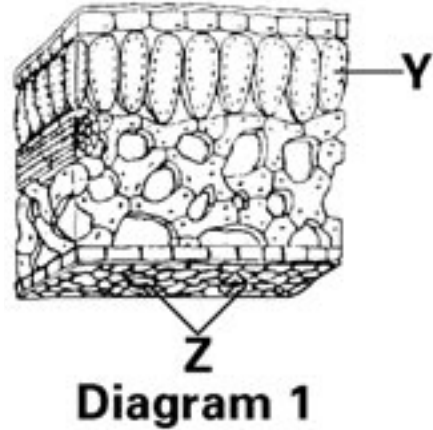


1. Cells which are connected together and have similar functions are called _____.
 - a. multicellular
 - b. tissue
 - c. groups
 - d. gases
2. Animals with backbones are called _____.
 - a. backers
 - b. brave
 - c. vertebrates
 - d. invertebrates
3. The group of animals that live part of their lives on land and part of their lives in the water are called _____.
 - a. frogs
 - b. reptiles
 - c. amphibians
 - d. fish
4. Stewardship involves being _____ living things.
 - a. careless with
 - b. careful with
 - c. afraid of
 - d. angry with
5. Stored energy is known as _____.
 - a. useless energy
 - b. potential energy
 - c. kinetic energy
 - d. low energy
6. If no movement takes place, _____ work is done.
 - a. a lot of
 - b. no
 - c. a little
 - d. easy
7. Physical records suggest that sometime in the past the whole earth had _____.
 - a. a similar climate
 - b. a polar climate
 - c. six different seasons
 - d. no climate
8. Fossils of plant and animal remains that have not decayed are called _____.
 - a. print fossils
 - b. original-remains fossils
 - c. petrified fossils
 - d. carbonized fossils
9. Many mountains were formed by _____.
 - a. the folding process
 - b. erosion
 - c. rain
 - d. highway crews
10. Matter can move. This property is called _____.
 - a. mass
 - b. bitterness
 - c. inertia
 - d. shape

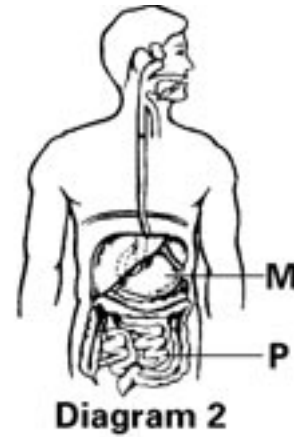
- 1a.
- b.
- c.
- d.
- 2a.
- b.
- c.
- d.
- 3a.
- b.
- c.
- d.
- 4a.
- b.
- c.
- d.
- 5a.
- b.
- c.
- d.
- 6a.
- b.
- c.
- d.
- 7a.
- b.
- c.
- d.
- 8a.
- b.
- c.
- d.
- 9a.
- b.
- c.
- d.
- 10a.
- b.
- c.
- d.



1. Study Diagram 1 of a leaf. The letter Y on the diagram labels the part of a leaf known as _____.
 - a. the chloroplast
 - b. the stomata
 - c. the cuticle
 - d. the spongy layer
2. Study Diagram 1. The letter Z on the diagram labels the part of a leaf known as _____.
 - a. the chloroplast
 - b. the stomata
 - c. the cuticle
 - d. the palisade layer
3. Photosynthesis requires chlorophyll, energy, and _____.
 - a. nitrogen
 - b. water
 - c. sulfur
 - d. magnesium
4. The leaf factory uses an animal by-product called _____.
 - a. carbon dioxide
 - b. oxygen
 - c. nitrogen
 - d. chlorophyll
5. The water and minerals flow up the root to the stem and leaves because of a _____.
 - a. straw
 - b. vacuum
 - c. root hair
 - d. pull of gravity
6. Water and minerals pass through the outside cell walls of the root from the _____.
 - a. soil
 - b. leaf
 - c. stem
 - d. grass
7. Leaves produce proteins, vitamins, and other foods. This food is transported by tubes called phloem to the _____.
 - a. leaves
 - b. atmosphere
 - c. roots
 - d. soil
8. The phloem and xylem are also parts of _____.
 - a. a leaf
 - b. the bark
 - c. the soil
 - d. a flower
9. Certain chemicals are produced naturally by plants. These chemicals _____.
 - a. can kill the plants
 - b. help the plants to grow properly
 - c. slow plant growth down
 - d. attract insects
10. The chemical 2, 4-D is an example of a helpful regulator. This chemical is used by man to _____.
 - a. kill weeds
 - b. poison animals
 - c. fertilize gardens
 - d. make plants green



- 1a.
- 1b.
- 1c.
- 1d.
- 2a.
- 2b.
- 2c.
- 2d.
- 3a.
- 3b.
- 3c.
- 3d.
- 4a.
- 4b.
- 4c.
- 4d.
- 5a.
- 5b.
- 5c.
- 5d.
- 6a.
- 6b.
- 6c.
- 6d.
- 7a.
- 7b.
- 7c.
- 7d.
- 8a.
- 8b.
- 8c.
- 8d.
- 9a.
- 9b.
- 9c.
- 9d.
- 10a.
- 10b.
- 10c.
- 10d.



1. Study Diagram 2. The letter *M* labels the part of the digestive system known as the _____.
 - a. esophagus
 - b. pancreas
 - c. stomach
 - d. liver
2. Study Diagram 2. The letter *P* labels the part of the digestive system known as the _____.
 - a. small intestine
 - b. large intestine
 - c. rectum
 - d. appendix
3. In the small intestine digested food _____.
 - a. dissolves into the blood
 - b. turns into sugar
 - c. becomes villi
 - d. turns into a liquid
4. Gastric juice in the stomach _____.
 - a. breaks down the tissues of meat
 - b. is only present in birds
 - c. lets the body know it's time to eat
 - d. a, b, and c
5. All blood passes through the kidneys so that _____.
 - a. poisons and waste can be filtered out
 - b. blood cells can be counted
 - c. sugars can be digested
 - d. oxygen can be added
6. The blood cells which cause blood to clot are called _____.
 - a. white blood cells
 - b. red blood cells
 - c. type AB
 - d. platelets
7. The strongest muscle is the cardiac muscle which is the muscle of the _____.
 - a. brain
 - b. heart
 - c. lungs
 - d. mouth
8. Bones store _____.
 - a. muscle
 - b. calories
 - c. calcium and phosphorous
 - d. a, b, and c
9. Christians should keep their bodies healthy by _____.
 - a. reading the Bible
 - b. going to church
 - c. witnessing
 - d. maintaining habits of good diet, exercise, and cleanliness
10. Eating fish oils and getting plenty of sunshine help to prevent the bone disease called _____.
 - a. rickets
 - b. muscular dystrophy
 - c. pneumonia
 - d. a common cold

- 1a.
- b.
- c.
- d.
- 2a.
- b.
- c.
- d.
- 3a.
- b.
- c.
- d.
- 4a.
- b.
- c.
- d.
- 5a.
- b.
- c.
- d.
- 6a.
- b.
- c.
- d.
- 7a.
- b.
- c.
- d.
- 8a.
- b.
- c.
- d.
- 9a.
- b.
- c.
- d.
- 10a.
- b.
- c.
- d.



1. The part of the brain which allows us to see, smell, hear, taste, and feel is the _____.
 - a. cerebrum
 - b. cerebellum
 - c. medulla
 - d. cranium
2. The part of the brain which is the center for breathing and the heartbeat is the _____.
 - a. cerebrum
 - b. cerebellum
 - c. medulla
 - d. cranium
3. Bird migration is an example of _____.
 - a. reflex
 - b. instinct
 - c. learned response
 - d. intelligence
4. A habit, such as reading your Bible daily, is an example of a (n) _____.
 - a. reflex
 - b. instinct
 - c. learned response
 - d. energy
5. Plants seeking water is an example of _____.
 - a. geotropism
 - b. phototropism
 - c. hydrotropism
 - d. negative tropism
6. Roots which grow downward into the soil are examples of _____.
 - a. geotropism
 - b. phototropism
 - c. hydrotropism
 - d. negative tropism
7. The northernmost biome is _____.
 - a. desert
 - b. forest
 - c. grassland
 - d. tundra
8. Two main groups of aquatic biomes are the marine biomes and the _____.
 - a. fresh-water biomes
 - b. tropical biomes
 - c. desert biomes
 - d. temperate biomes
9. The transfer of the minerals of the earth to living organisms and then back to the earth again is called a _____.
 - a. cycle
 - b. chain
 - c. circle
 - d. response
10. A balance of nature was established by God at the time of creation, and man _____.
 - a. has continually worked to maintain this balance
 - b. has had no influence on this balance of nature
 - c. has done many things to destroy this balance of nature
 - d. has been a good steward of God's creation

- 1a.
- b.
- c.
- d.
- 2a.
- b.
- c.
- d.
- 3a.
- b.
- c.
- d.
- 4a.
- b.
- c.
- d.
- 5a.
- b.
- c.
- d.
- 6a.
- b.
- c.
- d.
- 7a.
- b.
- c.
- d.
- 8a.
- b.
- c.
- d.
- 9a.
- b.
- c.
- d.
- 10a.
- b.
- c.
- d.



1. The two special cells in male-female reproduction are the _____.
 - a. sperm and egg
 - b. spore and egg
 - c. sperm and spore
 - d. spore and pollen
2. Two types of cells division which occur in male-female reproduction are reduction division and _____.
 - a. osmosis
 - b. tropism
 - c. mitosis
 - d. genetic
3. The father of genetics is _____.
 - a. George Washington
 - b. Carl Correns
 - c. Gregor Mendel
 - d. Punnet Square
4. Intelligence is not controlled by a single gene, but by several genes. This is known as _____.
 - a. the principle of dominance
 - b. multiple genes
 - c. the Punnet Square
 - d. incomplete dominance
5. The parts of a reproductive cell which carry genes are called _____.
 - a. genes
 - b. chromosomes
 - c. germs
 - d. sperms
6. Genes are made of _____.
 - a. DNA
 - b. chromosomes
 - c. genes
 - d. germs
7. An albino is an example of _____.
 - a. a mutation
 - b. evolution
 - c. a chromosome
 - d. a transmission
8. The color of a Siamese cat is an example of _____.
 - a. mutation
 - b. evolution
 - c. the temperature of the environment affecting the genes for color
 - d. a, b, and c
9. The presence of DNA assures that cattle produce cattle, dogs produce dogs, and so forth. God established this law at the time of creation. In Genesis 1:24 He said, "...Let the earth bring forth the living creature after his kind, cattle, and creeping thing, and beast of the earth after his kind; and it was so." "After his kind" means _____.
 - a. black dogs produce only black dogs and so forth
 - b. dogs produce dogs and so forth
 - c. female dogs produce only female dogs and so forth
 - d. only kind and good creatures are produced
10. Genetics, the science of heredity, _____ God's word.
 - a. disproves
 - b. questions
 - c. agrees with
 - d. contradicts

1a. b. c. d. 2a. b. c. d. 3a. b. c. d. 4a. b. c. d. 5a. b. c. d. 6a. b. c. d. 7a. b. c. d. 8a. b. c. d. 9a. b. c. d. 10a. b. c. d.

1. A pure substance that cannot be broken down by ordinary chemical means is _____.
- a. an element 1a.
b. matter b.
c. a molecule c.
d. a compound d.
2. Molecules may be defined as the chemical combination of two or more _____.
- a. elements 2a.
b. molecules b.
c. protons c.
d. atoms d.
3. The weight of an atom comes from adding _____ together.
- a. molecules 3a.
b. atoms b.
c. protons and neutrons c.
d. electrons and protons d.
4. The atomic number given in the Periodic Chart is the number of _____.
- a. molecules 4a.
b. protons in the nucleus b.
c. neutrons in the nucleus c.
d. electrons in the nucleus d.
5. A shiny, lustrous material that conducts electricity and heat is _____.
- a. a metal 5a.
b. a nonmetal b.
c. a radioactive substance c.
d. a rare earth element d.
6. An element which is unstable and breaks down of its own accord is _____.
- a. a metal 6a.
b. a nonmetal b.
c. a radioactive substance c.
d. a rare earth element d.
7. Oxygen has 8 plus-charged protons. The number of minus-charged electrons in oxygen is _____.
- a. 4 7a.
b. 8 b.
c. 2 c.
d. 16 d.
8. The atomic number of lithium is 3. The weight of lithium is 7. The lithium atom has 3 protons and _____ neutrons.
- a. 3 8a.
b. 4 b.
c. 7 c.
d. 0 d.
9. Lemon juice is an example of _____.
- a. a base 9a.
b. an acid b.
c. an element c.
d. an atom d.
10. Baking soda is an example of _____.
- a. a base 10a.
b. an acid b.
c. an element c.
d. an atom d.



1. Sound waves are a series of compressions and _____.
 - a. sessions
 - b. rings
 - c. rarefactions
 - d. fractions
2. Sound can be heard when sound waves cause vibrations on the _____.
 - a. eardrum
 - b. outer ear
 - c. ear canal
 - d. ear lobe
3. The bottom part of a light wave is called the _____.
 - a. crest
 - b. trough
 - c. low wave
 - d. length
4. Examples of radiations which cannot be seen by the human eye are _____.
 - a. translucent and opaque
 - b. photons and refraction
 - c. electromagnetic spectrums
 - d. ultraviolet rays and X rays
5. God promised never to flood the earth again. As a reminder of this promise, he sent _____.
 - a. less rain
 - b. thunder
 - c. a rainbow
 - d. clouds
6. A rainbow is visible because raindrops act as a _____.
 - a. mirror
 - b. prism
 - c. light wave
 - d. promise
7. The man who discovered the colors that make up light is _____.
 - a. Thomas Edison
 - b. Benjamin Franklin
 - c. Sir Isaac Newton
 - d. Nero
8. When the colors of light are mixed, they produce the color _____.
 - a. red
 - b. black
 - c. white
 - d. violet
9. A red tablecloth appears red because _____.
 - a. it absorbs all the red light in the spectrum
 - b. it reflects only the red light back to the eye
 - c. a blue dye has been used
 - d. in reality it is white
10. Red, green, and blue are _____.
 - a. the primary colors of light
 - b. the colors of the rainbow
 - c. opposite colors
 - d. secondary colors

- 1a.
- b.
- c.
- d.
- 2a.
- b.
- c.
- d.
- 3a.
- b.
- c.
- d.
- 4a.
- b.
- c.
- d.
- 5a.
- b.
- c.
- d.
- 6a.
- b.
- c.
- d.
- 7a.
- b.
- c.
- d.
- 8a.
- b.
- c.
- d.
- 9a.
- b.
- c.
- d.
- 10a.
- b.
- c.
- d.



1. Exerting a push or pull is known as _____.
 - a. force 1a.
 - b. work b.
 - c. motion c.
 - d. gravity d.
2. The force that pulls things toward the center of the earth is _____.
 - a. gravity 2a.
 - b. muscular b.
 - c. water c.
 - d. steam d.
3. The scientific definition of *work* is _____.
 - a. *force used to generate power* 3a.
 - b. *motion* b.
 - c. *horsepower* c.
 - d. *the amount of force times the distance it moves an object* d.
4. The unit for measuring work is called the _____.
 - a. foot-pound 4a.
 - b. horsepower b.
 - c. time c.
 - d. effort d.
5. The measurement of electrical power is called _____.
 - a. watts 5a.
 - b. shock b.
 - c. light c.
 - d. horsepower d.
6. 550 foot-pounds per second is _____.
 - a. 1 watt 6a.
 - b. 1 kilogram-meter b.
 - c. 1 cubic c.
 - d. 1 horsepower d.
7. The force that holds planets, stars, and other heavenly bodies in space is called _____.
 - a. inertia 7a.
 - b. gravity b.
 - c. universal force c.
 - d. cosmic force d.
8. The tendency of an object to remain at rest or to continue in motion with constant speed in a straight line is called _____.
 - a. inertia 8a.
 - b. gravity b.
 - c. constancy c.
 - d. pendulum d.
9. A force that opposes motion is _____.
 - a. inertia 9a.
 - b. gravity b.
 - c. work c.
 - d. friction d.
10. A mechanical device used to help do work is _____.
 - a. force 10a.
 - b. a machine b.
 - c. a circular c.
 - d. motion d.



1. The length of the earth's journey around the sun is _____.
 - a. 5 years
 - b. 10 years
 - c. 3 months
 - d. 1 year
2. The shape of the earth's orbit around the sun is _____.
 - a. circular
 - b. elliptical
 - c. horizontal
 - d. rectangular
3. The seasons are caused by the revolution of the earth around the sun and the _____.
 - a. earth's tilt on its axis
 - b. elevation
 - c. earth's shape
 - d. cloud coverage
4. Time zones are determined by the _____ of the earth's rotation.
 - a. speed
 - b. direction
 - c. longitude
 - d. eclipse
5. A solar eclipse occurs when _____.
 - a. the earth passes between the sun and the moon
 - b. the moon passes between the sun and the earth
 - c. comets pass between the sun and the earth
 - d. the sun is covered by clouds
6. A type of eclipse in which the moon is darkened is _____.
 - a. an ellipse
 - b. a solar eclipse
 - c. a lunar eclipse
 - d. an equinox
7. Five of the planets in our solar system are Mercury, Venus, Earth, Mars, and Jupiter. The other three planets are _____.
 - a. Juno, Pandora, and Popeye
 - b. Zeus, Ezra, and Pluto
 - c. Satin, Uranium, and Neptune
 - d. Saturn, Uranus, and Neptune
8. The smallest planet is _____.
 - a. Mercury
 - b. Uranus
 - c. Saturn
 - d. Earth
9. Shooting stars are called _____.
 - a. meteors
 - b. comets
 - c. asteriods
 - d. planets
10. A heavenly body with a long trail of gases is called _____.
 - a. a meteor
 - b. a comet
 - c. an asteroid
 - d. a planet

- 1a.
- b.
- c.
- d.
- 2a.
- b.
- c.
- d.
- 3a.
- b.
- c.
- d.
- 4a.
- b.
- c.
- d.
- 5a.
- b.
- c.
- d.
- 6a.
- b.
- c.
- d.
- 7a.
- b.
- c.
- d.
- 8a.
- b.
- c.
- d.
- 9a.
- b.
- c.
- d.
- 10a.
- b.
- c.
- d.



1. About 99 percent of the sun is made of _____.
 - a. molten lava 1a.
 - b. chemical fire b.
 - c. hydrogen and helium gases c.
 - d. oxygen d.
2. The power plant of the sun is its _____.
 - a. core 2a.
 - b. corona b.
 - c. solar flares c.
 - d. reflectors d.
3. The Milky Way Galaxy consists of _____.
 - a. one star 3a.
 - b. our solar system only b.
 - c. billions of stars c.
 - d. candy bars d.
4. Clouds of dust and gas found in the Milky Way are called _____.
 - a. galaxies 4a.
 - b. asteroids b.
 - c. meteoroids c.
 - d. nebulae d.
5. Scientists use a star's color to calculate its _____.
 - a. distance from earth 5a.
 - b. temperature b.
 - c. size c.
 - d. spectrum d.
6. The brightness of a star is called its _____.
 - a. magnitude 6a.
 - b. magnificence b.
 - c. magnifier c.
 - d. spectrum d.
7. Scientists study the dark lines in a star's spectrum to identify _____.
 - a. the star's name 7a.
 - b. the age of the star b.
 - c. elements in the star c.
 - d. the star's origin d.
8. An instrument used to study the spectrum of light of a star is a _____.
 - a. spectroscope 8a.
 - b. telescope b.
 - c. magnifying glass c.
 - d. microscope d.
9. The constellation which contains the Big Dipper is _____.
 - a. Ursa Major 9a.
 - b. Ursa Minor b.
 - c. Taurus c.
 - d. Orion d.
10. Cassiopeia is a constellation which looks like _____.
 - a. a bull 10a.
 - b. a hunter b.
 - c. a herdsman c.
 - d. a giant letter W or M d.



1. The tubes which transport water and minerals upward in the stem are called _____.
 - a. xylem
 - b. phloem
 - c. cuticle
 - d. cortex
2. Three functions of skin are to remove cell waste (sweating), to protect the body from germs and dirt, and to _____.
 - a. hold the body together
 - b. help humans get a suntan
 - c. cool the body
 - d. give each person a different color
3. The part of the brain which coordinates all the muscles so that they work together is the _____.
 - a. cerebrum
 - b. cerebellum
 - c. medulla
 - d. cranium
4. Plants seeking light is an example of _____.
 - a. geotropism
 - b. phototropism
 - c. hydrotropism
 - d. negative tropism
5. A change in a gene which forms a new trait that can be inherited is called _____.
 - a. transmissions
 - b. evolution
 - c. creation
 - d. a mutation
6. A substance whose molecules consist of atoms which are chemically united is _____.
 - a. an element
 - b. matter
 - c. a molecule
 - d. a compound
7. The loudness of a sound is the _____.
 - a. pitch
 - b. rarefaction
 - c. vibration
 - d. amplitude
8. The rate of doing work is called _____.
 - a. quickness
 - b. deadline
 - c. power
 - d. inertia
9. The prime meridian is located at _____.
 - a. 180°
 - b. 90°
 - c. 0°
 - d. 60°
10. The visible surface of the sun is called the _____.
 - a. core
 - b. corona
 - c. photosphere
 - d. reflector

- 1a.
- b.
- c.
- d.
- 2a.
- b.
- c.
- d.
- 3a.
- b.
- c.
- d.
- 4a.
- b.
- c.
- d.
- 5a.
- b.
- c.
- d.
- 6a.
- b.
- c.
- d.
- 7a.
- b.
- c.
- d.
- 8a.
- b.
- c.
- d.
- 9a.
- b.
- c.
- d.
- 10a.
- b.
- c.
- d.

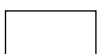
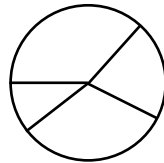


1. The standard metric unit of volume is the _____.
 - a. liter 1a.
 - b. cubic centimeter b.
 - c. cubic meter c.
 - d. milliliter d.
2. The standard metric unit of mass is the _____.
 - a. pound 2a.
 - b. gram b.
 - c. ton c.
 - d. kilogram d.
3. Objects are usually grouped together because they are _____.
 - a. small 3a.
 - b. large b.
 - c. similar c.
 - d. different d.
4. In terms of internal structure, a cat is most like _____.
 - a. a worm 4a.
 - b. a jellyfish b.
 - c. an insect c.
 - d. a bird d.
5. A scientific law is _____.
 - a. a deductive statement 5a.
 - b. an observation b.
 - c. a hypothesis c.
 - d. unbiblical d.
6. Deductive reasoning begins with _____.
 - a. an observation 6a.
 - b. an experiment b.
 - c. a generalization c.
 - d. research d.
7. The first step in applying the scientific method to solving a problem is _____.
 - a. identifying the problem 7a.
 - b. forming a hypothesis b.
 - c. conducting an experiment c.
 - d. drawing a conclusion d.
8. A guess that must either be proved or be disproved is _____.
 - a. a law 8a.
 - b. an observation b.
 - c. a conclusion c.
 - d. a hypothesis d.
9. Biological science deals with _____.
 - a. rocks and minerals 9a.
 - b. mathematics b.
 - c. plants and animals c.
 - d. money and laws d.
10. The sciences that deal with customs, laws, religion, and behavior are _____.
 - a. mathematics and logic 10a.
 - b. the social sciences b.
 - c. the physical sciences c.
 - d. the biological sciences d.



1. The metric system began in _____.
 - a. Germany
 - b. the United States
 - c. France
 - d. Great Britain
2. The United States began a formal shift toward use of the metric system under President _____.
 - a. Jackson
 - b. Lincoln
 - c. Wilson
 - d. Ford
3. Divisions of the metric system are based on the number _____.
 - a. twelve
 - b. two
 - c. ten
 - d. three
4. The dimension of length has _____ basic metric units.
 - a. one
 - b. three
 - c. two
 - d. four
5. Mass is a measure of _____.
 - a. density
 - b. volume
 - c. matter
 - d. weight
6. The response of an object to a gravitational force field is its _____.
 - a. mass
 - b. weight
 - c. density
 - d. volume
7. This type of graph is a _____ graph.
 - a. line
 - b. circle
 - c. bar
 - d. picto-
8. This type of graph is a _____ graph.
 - a. line
 - b. circle
 - c. bar
 - d. picto-
9. A pictograph is most similar to a _____ graph.
 - a. variable
 - b. circle
 - c. pie
 - d. bar
10. To relate parts of a quantity to the whole quantity, a _____ graph is best.
 - a. line
 - b. circle
 - c. bar
 - d. picto-

- 1a.
- b.
- c.
- d.
- 2a.
- b.
- c.
- d.
- 3a.
- b.
- c.
- d.
- 4a.
- b.
- c.
- d.
- 5a.
- b.
- c.
- d.
- 6a.
- b.
- c.
- d.
- 7a.
- b.
- c.
- d.
- 8a.
- b.
- c.
- d.
- 9a.
- b.
- c.
- d.
- 10a.
- b.
- c.
- d.



1. The motions of the sun, moon, and stars give the appearance that the center of the universe is the _____.
 - a. earth
 - b. sun
 - c. North Star
 - d. moon
2. Copernicus, Kepler, and Galileo promoted an explanation of planetary motion called the _____ theory.
 - a. geocentric
 - b. heliocentric
 - c. concentric
 - d. eccentric
3. Five lights in the night sky that sometimes do not follow the normal paths of stars are _____.
 - a. meteors
 - b. planets
 - c. comets
 - d. satellites
4. Something that could not happen if the sun and moon were on the same celestial sphere is _____.
 - a. comets
 - b. eclipses
 - c. sunsets
 - d. tides
5. The astronomer who modified Aristotle's geocentric theory with epicycles was _____.
 - a. Aristarchus
 - b. Ptolemy
 - c. Copernicus
 - d. Galileo
6. The astronomer whose observations with the unaided eye were used by other astronomers to predict the shape of orbits was _____.
 - a. Kepler
 - b. Brahe
 - c. Newton
 - d. Copernicus
7. The time taken for a planet to revolve around the sun is known as the _____.
 - a. month
 - b. period of revolution
 - c. orbital equation
 - d. speed of the planet
8. The sun occupies a point within the planetary orbits called the _____.
 - a. center
 - b. focal point
 - c. equinox
 - d. directrix
9. Gravitational attraction exists _____.
 - a. only between objects in our solar system
 - b. only between the earth and the moon
 - c. only between objects on the earth
 - d. between all objects everywhere
10. As the distance between objects increases, gravitational attraction _____.
 - a. increases
 - b. decreases
 - c. remains constant
 - d. is unaffected

- 1a.
- b.
- c.
- d.
- 2a.
- b.
- c.
- d.
- 3a.
- b.
- c.
- d.
- 4a.
- b.
- c.
- d.
- 5a.
- b.
- c.
- d.
- 6a.
- b.
- c.
- d.
- 7a.
- b.
- c.
- d.
- 8a.
- b.
- c.
- d.
- 9a.
- b.
- c.
- d.
- 10a.
- b.
- c.
- d.



1. Most of the energy used on the earth comes directly or indirectly from the _____.
 - a. center of the earth
 - b. decay of radioactive elements in the mantle
 - c. fusion reactions on the sun
 - d. combustion of coal
2. Solar energy is stored as chemical energy in the form of _____.
 - a. uranium
 - b. salt
 - c. petroleum
 - d. hydrogen
3. The element that serves as fuel for solar energy is _____.
 - a. uranium
 - b. hydrogen
 - c. petroleum
 - d. helium
4. The scientist who explained mathematically the conversion of mass to energy was _____.
 - a. Newton
 - b. Bohr
 - c. Einstein
 - d. Planck
5. The word that best describes an eclipse is _____.
 - a. surface
 - b. shadow
 - c. ring
 - d. light
6. *Umbra* refers to _____.
 - a. the darkest part of the eclipse
 - b. partial eclipse
 - c. the brilliant ring around the sun
 - d. the new moon
7. The largest planet is _____.
 - a. Mercury
 - b. Jupiter
 - c. Earth
 - d. Mars
8. Jupiter most closely resembles _____.
 - a. the sun
 - b. the moon
 - c. the earth
 - d. Mars
9. The high high tides and low low tides are called _____ tides.
 - a. flood
 - b. ebb
 - c. spring
 - d. neap
10. A seacoast town experiences _____ high tide(s) every twenty-four hours.
 - a. one
 - b. two
 - c. four
 - d. eight

- 1a.
- b.
- c.
- d.
- 2a.
- b.
- c.
- d.
- 3a.
- b.
- c.
- d.
- 4a.
- b.
- c.
- d.
- 5a.
- b.
- c.
- d.
- 6a.
- b.
- c.
- d.
- 7a.
- b.
- c.
- d.
- 8a.
- b.
- c.
- d.
- 9a.
- b.
- c.
- d.
- 10a.
- b.
- c.
- d.



1. The two most abundant atmospheric gases make up _____ of the atmosphere.
 - a. one-half
 - b. three-quarters
 - c. nine-tenths
 - d. well over nine-tenths
2. The most abundant gas is _____.
 - a. oxygen
 - b. carbon dioxide
 - c. nitrogen
 - d. hydrogen
3. The lowest layer of the atmosphere is the _____.
 - a. troposphere
 - b. ozonosphere
 - c. stratosphere
 - d. ionosphere
4. The part of the atmosphere in which radiation from space produces charged particles is the _____.
 - a. troposphere
 - b. ozonosphere
 - c. stratosphere
 - d. ionosphere
5. Seawater and certain sedimentary rocks are two reservoirs in the _____ cycle.
 - a. carbon
 - b. nitrogen
 - c. hydrogen
 - d. water
6. The cycle whose energy is provided by the sun during evaporation is the _____ cycle.
 - a. carbon
 - b. nitrogen
 - c. oxygen
 - d. water
7. Sulfur oxide pollutants are formed by using _____ as a fuel.
 - a. coal
 - b. natural gas
 - c. uranium
 - d. geothermal steam
8. Lead in the atmosphere interferes with the body's ability to produce _____.
 - a. carbon dioxide
 - b. blood
 - c. oxygen
 - d. calcium
9. Our role as steward implies that we _____ our natural resources.
 - a. consume
 - b. sell abroad
 - c. use wisely
 - d. recycle
10. A reasonable goal for an industrialized nation is _____.
 - a. to reduce pollution to zero
 - b. to reduce pollution by 50 percent
 - c. to accept the minimum pollution necessary to maintain a desirable life style
 - d. to accept the present level of pollution

- 1a.
- b.
- c.
- d.
- 2a.
- b.
- c.
- d.
- 3a.
- b.
- c.
- d.
- 4a.
- b.
- c.
- d.
- 5a.
- b.
- c.
- d.
- 6a.
- b.
- c.
- d.
- 7a.
- b.
- c.
- d.
- 8a.
- b.
- c.
- d.
- 9a.
- b.
- c.
- d.
- 10a.
- b.
- c.
- d.



1. The greatest effect on weather is exerted by _____.
 - a. wind
 - b. temperature
 - c. air pressure
 - d. moisture
2. The temperature of an air mass directly affects the _____ the air mass.
 - a. winds around
 - b. air pressure beneath
 - c. moisture within
 - d. precipitation from
3. Air pressure increases when _____.
 - a. the temperature of the air mass decreases
 - b. the temperature rises and the humidity remains constant
 - c. the temperature rises and the humidity increases
 - d. the temperature rises and the humidity decreases
4. The wind pattern around a low-pressure region is called _____.
 - a. a cyclone
 - b. an anticyclone
 - c. an aneroid
 - d. a downdraft
5. The air mass that typically forms over northern Canada is _____.
 - a. maritime polar
 - b. maritime tropical
 - c. continental polar
 - d. continental tropical
6. Tall, fluffy clouds are called _____.
 - a. cirrus
 - b. stratus
 - c. nimbo-stratus
 - d. cumulus
7. The boundary between two air masses is _____.
 - a. a storm
 - b. an isobar
 - c. a weather front
 - d. a downdraft
8. A drop in temperature is usually forecasted by the arrival of _____ front.
 - a. a warm
 - b. a cold
 - c. an occluded
 - d. a stationary
9. A small, local storm that forms from rapidly rising warm air is _____.
 - a. a thunderstorm
 - b. a tornado
 - c. a hurricane
 - d. a typhoon
10. The eye of a hurricane is characterized by _____.
 - a. heavy rain and winds greater than 80 kph
 - b. little rain and high winds
 - c. heavy rain and light winds
 - d. little rain and winds under 5 kph

- 1a.
- b.
- c.
- d.
- 2a.
- b.
- c.
- d.
- 3a.
- b.
- c.
- d.
- 4a.
- b.
- c.
- d.
- 5a.
- b.
- c.
- d.
- 6a.
- b.
- c.
- d.
- 7a.
- b.
- c.
- d.
- 8a.
- b.
- c.
- d.
- 9a.
- b.
- c.
- d.
- 10a.
- b.
- c.
- d.



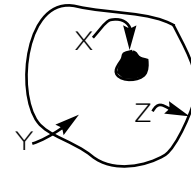
1. The weather that characterizes an area is the _____ of that area.
 - a. geography 1a.
 - b. barometric pressure b.
 - c. climate c.
 - d. latitude d.
2. A statement that might be part of a region's weather report is _____.
 - a. a yearly rainfall of 50 cm 2a.
 - b. a daily high of 35° C b.
 - c. an average seasonal temperature of 25° C c.
 - d. the Sunshine State d.
3. Primary control of a region's temperature results from _____.
 - a. radioactive decay 3a.
 - b. solar radiation b.
 - c. volcanic activity c.
 - d. geothermal heat d.
4. The coolest climates occur at _____.
 - a. high altitude and high latitude 4a.
 - b. low altitude and low latitude b.
 - c. high altitude and low latitude c.
 - d. low altitude and high latitude d.
5. Climate that has characteristics derived from being near water is called _____.
 - a. mesothermal 5a.
 - b. tropical b.
 - c. maritime c.
 - d. polar d.
6. The term *desert* is commonly a synonym for _____.
 - a. polar 6a.
 - b. tropical b.
 - c. maritime c.
 - d. arid d.
7. Communities within the Arctic Circle do not regulate their lives by _____.
 - a. the sun 7a.
 - b. laws b.
 - c. tradition c.
 - d. a clock d.
8. Rain forests provide adequate hunting and gathering for _____.
 - a. Pygmies 8a.
 - b. Bedouins b.
 - c. Eskimos c.
 - d. Mediterraneans d.
9. The continent whose entire interior is a desert is _____.
 - a. North America 9a.
 - b. Australia b.
 - c. Europe c.
 - d. South America d.
10. Tropical rain forests make up the interior of _____.
 - a. Australia 10a.
 - b. North America b.
 - c. Antarctica c.
 - d. South America d.



1-3 Answer these three questions by referring to the illustration.

708

1. X labels the part of the cell which is the _____.
- a. membrane
 - b. nucleus
 - c. Golgi
 - d. cytoplasm



2. Y labels the part of the cell which is the _____.
- a. membrane
 - b. granules
 - c. cytoplasm
 - d. corpuscle

3. Z labels the part of the cell which is the _____.
- a. membrane
 - b. nucleus
 - c. cytoplasm
 - d. corpuscle

4. Parts of the body, such as the nose, trachea, and lungs, that work together are collectively called _____.
- a. tissues
 - b. organs
 - c. systems
 - d. organisms

5. The heart, kidney, liver, and other bodily parts that each carry out one or more jobs are individually called _____.
- a. a tissue
 - b. an organ
 - c. a system
 - d. an organism

6. The flexible support tissue that gives shape to, among other things, the tip of the nose and the ears is _____.
- a. cartilage
 - b. ossicle
 - c. cilia
 - d. osteum

7. Stomach and intestinal movement are controlled by _____.
- a. voluntary muscles
 - b. cardiac muscles
 - c. involuntary muscles
 - d. striped muscles

8. The gap between nerve cells is called _____.
- a. a synapse
 - b. an axon
 - c. a neutron
 - d. a dendrite

9. The part of the brain that controls coordination and voluntary movements is the _____.
- a. medulla
 - b. cerebellum
 - c. cerebrum
 - d. spinal cord

10. The central nervous system is made up of the _____.
- a. cerebellum, eyes, and ears
 - b. cerebellum, speech center, and eyes
 - c. cerebrum, eyes, and ears
 - d. cerebrum, cerebellum, and spinal cord

- 1a.
- b.
- c.
- d.

- 2a.
- b.
- c.
- d.

- 3a.
- b.
- c.
- d.

- 4a.
- b.
- c.
- d.

- 5a.
- b.
- c.
- d.

- 6a.
- b.
- c.
- d.

- 7a.
- b.
- c.
- d.

- 8a.
- b.
- c.
- d.

- 9a.
- b.
- c.
- d.

- 10a.
- b.
- c.
- d.

1. The circulatory system is made up of the _____.
 - a. heart, lungs, kidneys, and liver
 - b. heart, veins, capillaries, and arteries
 - c. lungs, kidneys, liver, and thyroid
 - d. mouth, stomach, small intestine, and large intestine
2. Blood that arrives at the heart goes first to the _____.
 - a. lungs
 - b. brain
 - c. abdomen
 - d. kidneys
3. White blood cells are designed to _____.
 - a. transport oxygen
 - b. carry nutrients
 - c. fight infection
 - d. prevent hemorrhages
4. The purpose of blood platelets is to _____.
 - a. stop bleeding
 - b. carry oxygen
 - c. prevent infection
 - d. produce antibodies
5. Digestion of protein begins in the _____.
 - a. mouth
 - b. stomach
 - c. small intestine
 - d. large intestine
6. In the mouth digestion of _____ begins.
 - a. protein
 - b. starch
 - c. fat
 - d. sugar
7. The function of the kidneys is similar to the function of _____.
 - a. a carburetor
 - b. a brake cylinder
 - c. an oil filter
 - d. a windshield wiper
8. The bladder is connected directly to the _____.
 - a. heart
 - b. stomach
 - c. large intestine
 - d. kidneys
9. The master control gland for the body is the _____ gland.
 - a. pituitary
 - b. pancreas
 - c. thymus
 - d. adrenal
10. Physical or emotional stress produces a response in the _____ gland.
 - a. pituitary
 - b. pancreas
 - c. adrenal
 - d. thymus

1a. b. c. d. 2a. b. c. d. 3a. b. c. d. 4a. b. c. d. 5a. b. c. d. 6a. b. c. d. 7a. b. c. d. 8a. b. c. d. 9a. b. c. d. 10a. b. c. d.

1. Information gained during an experiment is called _____.
 - a. data 1a.
 - b. conclusions b.
 - c. hypothesis c.
 - d. laws d.
2. The prefix *kilo-* means _____.
 - a. one-thousandth 2a.
 - b. one-hundredth b.
 - c. one thousand c.
 - d. one million d.
3. The word *geocentric* means _____.
 - a. astronomical 3a.
 - b. sun-centered b.
 - c. solar c.
 - d. earth-centered d.
4. The scientist whose name is given to the law of gravitation is _____.
 - a. Kepler 4a.
 - b. Aristotle b.
 - c. Newton c.
 - d. Copernicus d.
5. The type of reaction that generates the sun's energy is _____.
 - a. fusion 5a.
 - b. fission b.
 - c. chemical c.
 - d. oxidation d.
6. The gas comprising about 21 percent of our atmosphere is _____.
 - a. oxygen 6a.
 - b. carbon dioxide b.
 - c. nitrogen c.
 - d. hydrogen d.
7. A narrow, funnel-shaped cloud of rapidly rotating winds around a low-pressure center is _____.
 - a. a thunderstorm 7a.
 - b. a tornado b.
 - c. a hurricane c.
 - d. a typhoon d.
8. Air pressure at high elevations is less than at sea level because _____.
 - a. warm air is lighter than cold air 8a.
 - b. winds blow up mountain slopes b.
 - c. less air overlies high elevations c.
 - d. temperatures are cooler at high elevations d.
9. The outer skin layer is the _____.
 - a. hairline 9a.
 - b. dermis b.
 - c. epidermis c.
 - d. fatty layer d.
10. Metabolism and growth rate are controlled by the _____ gland.
 - a. pancreas 10a.
 - b. thyroid b.
 - c. thymus c.
 - d. adrenal d.



1. Science is best defined as _____.
- a. an orderly arrangement of knowledge
 - b. an accumulation of information
 - c. the study of physics, chemistry, and geology
 - d. incorrect and unscriptural assumptions
2. A complete and correct statement is that technology _____.
- a. is the cause of the world's pollution problems
 - b. draws people away from the good things in life
 - c. is amoral; that is, neither good nor bad
 - d. will solve the world's basic problems
3. Most Greek philosophers were not true scientists because they _____.
- a. could not read
 - b. did not experiment
 - c. were concerned more with art and literature than with things of nature
 - d. were not government funded
4. The birth of technology occurred with the _____.
- a. Industrial Revolution
 - b. Renaissance
 - c. invention of the wheel
 - d. atomic age
5. The number 93 million, in scientific notation, is _____.
- a. 93,000,000
 - b. 93 million
 - c. 93×10^6
 - d. 9.3×10^7
6. A correct scientific notation is _____.
- a. 431×10^{-3}
 - b. 7×10^9
 - c. 16×10^5
 - d. 0.05×10^8
7. The metric unit of mass is the _____.
- a. kilogram
 - b. meter
 - c. pound
 - d. liter
8. A measure of volume is _____.
- a. meter
 - b. liter
 - c. second
 - d. gram
9. A scientist is most likely to find out if his guess is correct by _____.
- a. performing experiments
 - b. asking a graduate student
 - c. thinking about the question
 - d. using a computer
10. The announced or published result of interpreting the data collected in an investigation is _____.
- a. a law
 - b. a theory
 - c. a problem
 - d. an experiment

- 10a.
- b.
- c.
- d.



1. All matter in the universe has _____.
 - a. magnetism
 - b. momentum
 - c. mass
 - d. motion
2. Matter on earth exists in at least one of _____ states.
 - a. two
 - b. three
 - c. twelve
 - d. twenty
3. Generally, molecules of a solid are more _____ than are molecules of other states.
 - a. spread out
 - b. close together
 - c. highly active
 - d. free to move
4. The gaseous state of a substance (for example, water) differs from the solid state in that the gaseous state has _____.
 - a. a definite volume
 - b. high speed molecules
 - c. less energy
 - d. a definite shape
5. The nuclei of most atoms are made of _____.
 - a. protons and electrons
 - b. electrons and nucleons
 - c. neutrons and protons
 - d. neutrons and electrons
6. Of the following choices the compound is _____.
 - a. H₂O
 - b. H₂
 - c. saltwater
 - d. Ne
7. An example of a mixture is _____.
 - a. hot water
 - b. salt water
 - c. sodium hydroxide
 - d. hydrogen

Answer Items 8 through 10 by referring to the entry for potassium.

8. The number of protons in an atom of potassium is _____.

2	19
8	K
8	
1	39

 - a. 2
 - b. 19
 - c. 20
 - d. 39
9. The number of protons in an atom is called the _____.
 - a. mass number
 - b. atomic mass
 - c. valence
 - d. atomic number
10. The number of particles in the nucleus of a potassium atom is _____.
 - a. 2
 - b. 19
 - c. 20
 - d. 39



1. Common table salt (NaCl) is composed of sodium, a highly reactive metal, and chlorine, a poisonous gas. The harmless product is a result of a _____ reaction.
- a. nuclear
b. chemical
c. physical
d. phase
2. An extremely small amount of matter is converted to energy in a _____ reaction.
- a. nuclear
b. chemical
c. physical
d. phase
3. The fuel for a fusion reaction is _____.
- a. hydrogen
b. helium
c. radium
d. uranium
4. A common fuel for fission reactions is _____.
- a. hydrogen
b. helium
c. lead
d. uranium
5. Beta radiation consists of _____ emitted from an atomic nucleus.
- a. protons
b. neutrons
c. electrons
d. mesons
6. Gamma radiation is most similar to _____.
- a. alpha radiation
b. sound
c. light
d. electrons
7. Of the following choices the acid is _____.
- a. NaOH
b. KCl
c. HNO₃
d. NaHCO₃
8. An identifying characteristic of an acid in solution is _____.
- a. H⁺
b. OH⁻
c. K⁺
d. O⁼
9. All bases contain _____.
- a. oxygen and sodium
b. helium and potassium
c. oxygen and hydrogen
d. hydrogen and potassium
10. Of the following choices the base is _____.
- a. NaHCO₃
b. HNO₃
c. NaOH
d. KCl

- 1a.
b.
c.
d.
- 2a.
b.
c.
d.
- 3a.
b.
c.
d.
- 4a.
b.
c.
d.
- 5a.
b.
c.
d.
- 6a.
b.
c.
d.
- 7a.
b.
c.
d.
- 8a.
b.
c.
d.
- 9a.
b.
c.
d.
- 10a.
b.
c.
d.



1. Starches and sugars are both classified as _____.
 - a. proteins
 - b. fats
 - c. carbohydrates
 - d. vitamins
2. The nutrient class that is neither animal nor vegetable is _____.
 - a. proteins
 - b. fats
 - c. minerals
 - d. carbohydrates
3. The nutrient that transports vitamins A, D, and E and that is a slow-energy source is _____.
 - a. proteins
 - b. minerals
 - c. fats
 - d. carbohydrates
4. Complex organic substances necessary in small amounts for normal growth and health are _____.
 - a. minerals
 - b. vitamins
 - c. carbohydrates
 - d. fats
5. Cheese and butter belong to the _____ food group.
 - a. vegetables
 - b. grains
 - c. dairy
 - d. protein
6. The grains food group includes _____.
 - a. macaroni, rice, and spaghetti
 - b. spaghetti, peas, and peanut butter
 - c. cheese, rice, and bread
 - d. beans, fish, and rice
7. Fats begin digestion in the _____.
 - a. mouth
 - b. stomach
 - c. small intestine
 - d. large intestine
8. Proteins begin digestion in the _____.
 - a. mouth
 - b. stomach
 - c. small intestine
 - d. large intestine
9. Exposure to sunshine is necessary for the body to produce _____.
 - a. Vitamin A
 - b. Vitamin B
 - c. Vitamin C
 - d. Vitamin D
10. Vitamin C-deficiency symptoms, such as excessive bleeding and bruising, may be relieved by adding _____ to the diet.
 - a. whole-grain cereals
 - b. lean meats
 - c. oranges and tomatoes
 - d. milk and cheese

- 1a.
- b.
- c.
- d.
- 2a.
- b.
- c.
- d.
- 3a.
- b.
- c.
- d.
- 4a.
- b.
- c.
- d.
- 5a.
- b.
- c.
- d.
- 6a.
- b.
- c.
- d.
- 7a.
- b.
- c.
- d.
- 8a.
- b.
- c.
- d.
- 9a.
- b.
- c.
- d.
- 10a.
- b.
- c.
- d.

1. *Any push or pull* is the definition of _____.
 - a. force 1a.
 - b. mass b.
 - c. energy c.
 - d. work d.
2. Every object in the universe is always _____.
 - a. at rest 2a.
 - b. doing work b.
 - c. exerting force c.
 - d. curving d.
3. An example of an object with potential energy is _____.
 - a. an airplane at 35,000 feet 3a.
 - b. a car traveling 80 km/hr b.
 - c. an engine on a siding c.
 - d. a pendulum at the bottom of its swing d.
4. The total energy an object possesses equals _____.
 - a. kinetic energy minus potential energy 4a.
 - b. potential energy minus kinetic energy b.
 - c. one-half kinetic energy plus potential energy c.
 - d. kinetic energy plus potential energy d.
5. The handle of a spoon in a soup bowl feels hot because of _____.
 - a. conduction 5a.
 - b. convection b.
 - c. radiation c.
 - d. both a and c d.
6. Heat is distributed throughout the water in a teakettle because of _____.
 - a. conduction 6a.
 - b. convection b.
 - c. radiation c.
 - d. none of these d.
7. Ten percent of the energy needed for the United States is supplied by the energy of falling water converted to _____ energy.
 - a. electrical 7a.
 - b. chemical b.
 - c. atomic c.
 - d. geothermal d.
8. The most frequent energy conversion is that of mechanical energy to _____.
 - a. chemical energy 8a.
 - b. radiant energy b.
 - c. heat energy c.
 - d. electrical energy d.
9. The disorder of creation in general is _____.
 - a. increasing 9a.
 - b. decreasing b.
 - c. remaining constant c.
 - d. increasing and decreasing d.
10. The Second Law of Thermodynamics states that the amount of available energy in the universe is _____.
 - a. decreasing 10a.
 - b. increasing b.
 - c. constant c.
 - d. radiant d.



1. A magnet has _____ pole(s).
 - a. one 1a.
 - b. two b.
 - c. three c.
 - d. four d.

 2. A substance commonly used to show a magnet's lines of force is _____.
 - a. sawdust 2a.
 - b. iron filings b.
 - c. water c.
 - d. salt d.

 3. Electrical charges are different from magnetic poles in that _____.
 - a. unlikes attract 3a.
 - b. likes repel b.
 - c. charged objects attract all uncharged objects c.
 - d. magnetic poles attract all nonmagnetic objects d.

 4. The statement that is *not* a law of electrostatics is _____.
 - a. objects with unlike charges attract each other 4a.
 - b. objects with like charges repel each other b.
 - c. charged objects repel neutral objects c.
 - d. charged objects attract neutral objects d.

 5. An electric circuit that has only one path is a _____ circuit.
 - a. complex 5a.
 - b. series b.
 - c. perpendicular c.
 - d. parallel d.
-
6. If in Item 5 V equals 6 volts and R equals 2 ohms, the current, I , is _____ amperes.
 - a. 4 6a.
 - b. 12 b.
 - c. 3 c.
 - d. 8 d.

 7. The first battery of silver and zinc was constructed by _____.
 - a. Fred E. Eveready 7a.
 - b. Al Volta b.
 - c. Ray O'Vac c.
 - d. Thomas Edison d.

 8. The first working light bulb was developed in the laboratory of _____.
 - a. Franklin 8a.
 - b. Coulomb b.
 - c. Edison c.
 - d. Morse d.

 9. The most abundant fuel in the United States is _____.
 - a. petroleum 9a.
 - b. coal b.
 - c. natural gas c.
 - d. uranium d.

 10. Solar power does not produce a high percentage of our electricity needs because _____.
 - a. the sun's energy that reaches the earth is insufficient 10a.
 - b. no means exist to conduct sunlight to cities b.
 - c. the technology is expensive c.
 - d. the Federal government has imposed a moratorium d.



1. Surveyors and mapmakers use _____ to represent distances that cannot be drawn directly.
 - a. arithmetic
 - b. geometry
 - c. calculus
 - d. statistics
2. Indirect measurement is used _____.
 - a. along highways between cities
 - b. in building houses
 - c. in measuring distances to planets
 - d. in designing automobiles
3. A symbol commonly used to represent a force is _____.
 - a. x
 - b. •
 - c. →
 - d. 0
4. The result of a force to the north and a force to the east is a force to the _____.
 - a. northeast
 - b. southeast
 - c. southwest
 - d. northwest
5. An object that has no force acting on it is likely to _____.
 - a. move in a straight line
 - b. come to a stop
 - c. move in a circle
 - d. fall to the ground
6. The result of a single force acting on an object is _____.
 - a. cancelled by the object's weight
 - b. acceleration
 - c. no movement
 - d. rotation
7. The rate of doing work is _____.
 - a. power
 - b. energy
 - c. force
 - d. mass
8. If work is "bought," _____ must be "spent."
 - a. power
 - b. joules
 - c. energy
 - d. mass
9. The work done in lifting a forty-pound crate three feet is _____ foot-pounds.
 - a. forty-three
 - b. thirteen
 - c. one hundred twenty
 - d. thirty-seven
10. If twenty-four joules of energy are spent in four seconds, the rate of output is _____ watts.
 - a. six
 - b. ninety-six
 - c. twenty
 - d. twenty-eight

- 1a.
- b.
- c.
- d.
- 2a.
- b.
- c.
- d.
- 3a.
- b.
- c.
- d.
- 4a.
- b.
- c.
- d.
- 5a.
- b.
- c.
- d.
- 6a.
- b.
- c.
- d.
- 7a.
- b.
- c.
- d.
- 8a.
- b.
- c.
- d.
- 9a.
- b.
- c.
- d.
- 10a.
- b.
- c.
- d.



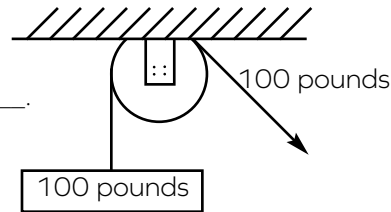
1. The friction that brings a boat to a stop after the motor has been cut is _____ friction.
 - a. rolling
 - b. sliding
 - c. atomic
 - d. fluid
2. Dragging a flatbed across the ground produces _____ friction.
 - a. sliding
 - b. rolling
 - c. atomic
 - d. fluid
3. To lessen resistance of a boat moving through water, engineers often adjust the _____.
 - a. grease on the bearings
 - b. number of sails
 - c. size of the engine
 - d. shape of the hull
4. An application of the inclined plane is the _____.
 - a. wedge
 - b. wheel and axle
 - c. lever
 - d. gear

- 1a.
- b.
- c.
- d.
- 2a.
- b.
- c.
- d.
- 3a.
- b.
- c.
- d.
- 4a.
- b.
- c.
- d.

Answer Items 5 through 7 from the illustration.

5. The ideal mechanical advantage of the single fixed pulley is _____.

- a. 0
- b. 1
- c. 100
- d. 200



- 5a.
- b.
- c.
- d.

6. The actual mechanical advantage of the pulley is _____.

- a. 0
- b. 1
- c. 100
- d. 200

- 6a.
- b.
- c.
- d.

7. The efficiency of the pulley is _____ percent.

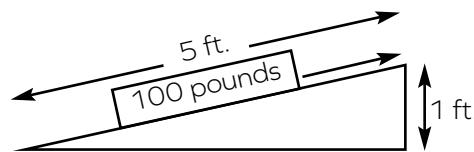
- a. 0
- b. 1
- c. 100
- d. 200

- 7a.
- b.
- c.
- d.

Answer Items 8 through 10 from the illustration.

8. The work input on the inclined plane is _____ foot-pounds.

- a. 100
- b. 25
- c. 125
- d. 2,500



- 8a.
- b.
- c.
- d.

9. The work output is _____ foot-pounds.

- a. 100
- b. 25
- c. 125
- d. 2,500

- 9a.
- b.
- c.
- d.

10. The efficiency of the inclined plane is _____ percent.

- a. 80
- b. 100
- c. 50
- d. 25

- 10a.
- b.
- c.
- d.

1. About five people could be fed by one United States farmer in 1910, and by 1970 more than _____ people could be fed.
 - a. 40
 - b. 80
 - c. 120
 - d. 160
2. The forerunner of the wheat grown today for bread and cereal was most like _____.
 - a. wild grass
 - b. bulrushes
 - c. corn cobs
 - d. green beans
3. The result of crossing two different strains of plants or animals is called a _____.
 - a. thoroughbred
 - b. hybrid
 - c. halfbreed
 - d. crossbreed
4. A desired trait that has resulted from selective breeding of corn is _____.
 - a. taller plants
 - b. more green leaves
 - c. larger ears
 - d. more silk
5. Decomposers in the soil _____.
 - a. produce compounds poisonous to plants
 - b. return dead material to simpler forms
 - c. have little significant value
 - d. live in leaf nodules
6. A common practice that reintroduces nutrients into the soil is _____.
 - a. one-crop agriculture
 - b. terrace farming
 - c. contour plowing
 - d. crop rotation
7. The energy-input part of the water cycle is _____.
 - a. evaporation
 - b. precipitation
 - c. run-off
 - d. percolation
8. The rate of evaporation depends on the temperature of the air and water, the wind, and _____.
 - a. the amount of moisture already in the air
 - b. the angle of the sun
 - c. the amount of water in the ocean
 - d. the presence of trees and shrubs
9. The term *ecology* comes from a Greek word that means _____.
 - a. pollution
 - b. home
 - c. recycling
 - d. gum wrapper
10. The total amount of living material in an area is called _____.
 - a. biomass
 - b. protoplasm
 - c. food pyramid
 - d. omnivore

1a. b. c. d. 2a. b. c. d. 3a. b. c. d. 4a. b. c. d. 5a. b. c. d. 6a. b. c. d. 7a. b. c. d. 8a. b. c. d. 9a. b. c. d. 10a. b. c. d. 

1. A complete and correct definition of *technology* is the _____.
- a. application of science
 - b. source of pollution
 - c. opposite of simplicity
 - d. basis of war
2. Science as an orderly system of thought began with the philosopher _____.
- a. Copernicus
 - b. Newton
 - c. Aristotle
 - d. Democritus
3. Substances that have only one kind of atom are called _____.
- a. matter
 - b. elements
 - c. molecules
 - d. atoms
4. An example of a physical change (only) is _____.
- a. metal rusting
 - b. an acid dissolving limestone
 - c. water evaporating
 - d. wood burning
5. Kinetic energy depends upon _____.
- a. matter and motion
 - b. matter and force
 - c. height and force
 - d. matter and height
6. A measure of disorder is called _____.
- a. energy
 - b. entropy
 - c. power
 - d. wattage
7. The formula for work is _____.
- a. $F = ma$
 - b. $F = G \frac{mm}{d^2}$
 - c. $I = Prt$
 - d. $W = Fd$
8. To reduce friction the powdered lubricant _____ is used.
- a. silicone
 - b. grease
 - c. graphite
 - d. grabtite
9. The simple machine that has a fulcrum is the _____.
- a. wedge
 - b. wheel and axle
 - c. lever
 - d. gear
10. Bacteria in leguminous plants produce _____ compounds.
- a. oxygen
 - b. carbon
 - c. hydrogen
 - d. nitrogen

- 1a.
- b.
- c.
- d.
- 2a.
- b.
- c.
- d.
- 3a.
- b.
- c.
- d.
- 4a.
- b.
- c.
- d.
- 5a.
- b.
- c.
- d.
- 6a.
- b.
- c.
- d.
- 7a.
- b.
- c.
- d.
- 8a.
- b.
- c.
- d.
- 9a.
- b.
- c.
- d.
- 10a.
- b.
- c.
- d.





804 N. 2nd Ave. E.
Rock Rapids, IA 51246-1759

800-622-3070
www.aop.com

SD001 - Sep '19 Printing

ISBN 978-0-7403-0045-5



9 780740 300455